

## Product Summary

### Part 1 : Dimensions

<b>Width</b>	190	mm
<b>Length</b>	1900	mm
<b>Total Thickness</b>	14	mm
<b>Oak Veneer</b>	2mm	mm
<b>Boards Per Box</b>	6	planks
<b>Nested Planks</b>	25%	planks
<b>Box Size</b>	2.166	sqm

### Part 2 : General Data

<b>Veneer Origin</b>	European Oak
<b>Core Type</b>	8 Layers of Cross-Bonded Eucalyptus & Birch
<b>Surface Coating</b>	9 - 12 Coats Lacquer, UV-Cured
<b>Installation System</b>	5G Click System
<b>Installation Method &amp; Adhesives</b>	Floating (5G Click) Full Trowel Glue-Down
<b>Profile &amp; Edging</b>	Micro-Bevel Edge
<b>Surface Finish</b>	Matte, Light Wire Brushed
<b>Box Weight</b>	21kg
<b>Packs Per Pallet</b>	55
<b>Pattern Repeat</b>	None, Real Timber
<b>Slip Rating Classification</b>	P3

<b>Lacquer Finish</b>	<p>EverGuard™ Protection, developed with Teknos Treffert Parquet Lacquer, each board with 9 - 11 Coats, utilising 6 types of lacquer:</p> <ul style="list-style-type: none"> <li>◆ UV PU Primer Base Coat</li> <li>◆ UV Transparent Sealer Base Coat</li> <li>◆ UV Anti Scratch Sealer Base Coat</li> <li>◆ UV Sealer Low Gloss Base Coat</li> <li>◆ UV Super Matt Top Coat</li> </ul>
-----------------------	--

### Part 3 : Timber Grading

<b>Timber Grade</b>	Natural Standard Grade (ABCD)
<b>Filled Defects</b>	Allowed
<b>Sapwood</b>	Included
<b>Filler Colour</b>	Lighter Colours: Close Match Filler (slightly darker than floor colour) Darker Colours: Brown Filler (slightly darker than floor colour)
<b>Maximum Size of Knots</b>	40mm
<b>Heart / Pith</b>	Trace
<b>End Checks</b>	Filled
<b>Insect Damage</b>	Filled
<b>Ingrown Bark</b>	Not Allowed
<b>Timber Variation</b>	As a natural timber product, colour variation and pattern variations are to be expected, and may vary slightly batch-to-batch. Timber is also photo-sensitive, meaning colour and appearance may change slightly over time with exposure to natural light. Timber may also “check” and show minor surface splits / cracks over time based on environmental changes. Our Royal 14/2mm Oak 5G Click floor is ABCD grade, the most natural and popular grade that showcases the beauty and variations of natural timber.

## Part 4 : Warranty

<b>General Residential</b>	20 (Refer to Warranty Guidelines)	Years
<b>Light Commercial</b>	5 (Refer to Warranty Guidelines)	Years

# Part 5: Fire Test (AS ISO 9239.1-2003)

## TEST REPORT

**Client :** Everfloor  
 2A 87 Allingham Street  
 Condell Park NSW 2200

**Test Number :** 25-000968  
**Issue Date :** 16/04/2025  
**Print Date :** 16/04/2025

**AS ISO 9239.1-2003**

**Reaction to Fire Tests for Floorings. Determination of the Burning Behaviour using a Radiant Heat Source**

Date of Sample Arrival 18-03-2025

Date Tested 16-04-2025

CHF Value	1	2	3	Mean
Length	3.7	4.0	4.5	4.1 kW/m <sup>2</sup>
Width	3.9	-	-	- kW/m <sup>2</sup>
HF-30 Value	1	2	3	Mean
Length	3.7	4.4	-	- kW/m <sup>2</sup>
Width	4.2	-	-	- kW/m <sup>2</sup>
Smoke Value	1	2	3	Mean
Length	36	12	19	22 %.min
Width	29	-	-	- %.min

347658

76059

Page 2 of 3

© Australian Wool Testing Authority Ltd  
 Copyright - All Rights Reserved

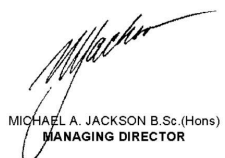


Accredited for compliance with ISO/IEC 17025 - Testing  
 Accreditation Numbers: 983, 985, and 1356

Samples and their identifying descriptions have been provided by the client unless otherwise stated. AWTA Ltd makes no warranty, implied or otherwise, as to the source of the tested samples. The above test results relate only to the sample or samples tested. This document shall not be reproduced except in full and shall be rendered void if amended or altered. This document, the names AWTA Product Testing and AWTA Ltd may be used in advertising providing the content and format of the advertisement have been approved by the Managing Director of AWTA Ltd.




Fiona McDonald  
 APPROVED SIGNATORY



MICHAEL A. JACKSON B.Sc.(Hons)  
 MANAGING DIRECTOR

0204/11/06

# Part 6 : Wet Pendulum Slip Test (AS 4586-2013)

## TEST REPORT

**Client :** Everfloor  
 2A 87 Allingham Street  
 Condell Park NSW 2200

**Test Number :** 25-000868  
**Issue Date :** 2/04/2025  
**Print Date :** 2/04/2025

**AS 4586-2013  
 Appendix A**

**Slip Resistance Classification of new Pedestrian Surface Materials  
 Wet Pendulum Test Method**

Date of Testing 02-04-2025  
 Operator AWTA Test Operator 14  
 Test Temperature (20±5degC) 22 °C  
 Specimens Washed with pH Neutral Detergent then Dried  
 Test Direction Length  
 Fixed/Unfixed Unfixed  
 Slider No 96 Batch No 33  

Length	1	2	3	4	5	SRV
British Pendulum number	46	44	40	40	47	43

 Classification P3

Equipment: Cooper Pendulum Skid Tester Serial No: 1433-01 Calibrated 11/10/2023  
 Slider prepared using P400 and 3µm lapping film.

These results apply only to the specimens tested and it is recommended that before selection of flooring or paving materials the effect of service conditions, including maintenance and wear on their slip resistance be checked.

346422

75954

Page 2 of 2

© Australian Wool Testing Authority Ltd  
 Copyright - All Rights Reserved



Accredited for compliance with ISO/IEC 17025 - Testing  
 Accreditation Numbers: 983, 985, and 1356

Samples and their identifying descriptions have been provided by the client unless otherwise stated. AWTA Ltd makes no warranty, implied or otherwise, as to the source of the tested samples. The above test results relate only to the sample or samples tested. This document shall not be reproduced except in full and shall be rendered void if amended or altered. This document, the names AWTA Product Testing and AWTA Ltd may be used in advertising providing the content and format of the advertisement have been approved by the Managing Director of AWTA Ltd.




Fiona McDonald  
 APPROVED SIGNATORY



MICHAEL A. JACKSON B.Sc.(Hons)  
 MANAGING DIRECTOR

0204/11/06

# Part 7: Acoustic Test (Royal 14/2mm Oak + 2mm EVERQUIET IXPE Underlay)

<b>System Tested</b>	$L'_{nTw}$ <sup>3</sup>	FIIC <sup>4, 5</sup>	AAAC <sup>6</sup>
<b>Bare Concrete Floor (ECFS only) - for comparison purposes only</b>	55	49	3
<b>Royal 14/2mm Oak + 2mm Everquiet IXPE Underlay</b>	42	67	5

## FIELD MEASUREMENTS OF IMPACT SOUND INSULATION OF FLOORS



Date of Test : Tuesday, 29 March 2022  
 Project No. : 3523  
 Testing Company : Koikas Acoustics  
 Checked by : Nick Koikas  
 Place of Test: Residential apartments in Sydney, NSW  
 Client : Everfloor / EverQuiet  
 Client Address : -

Description	Thickness (mm)	Density (S)
14 mm engineered flooring	14	--
2 mm EverQuiet IXPE underlay	2	--
Floor Concrete slab	180-200	--
System Suspended ceiling	80-150	--

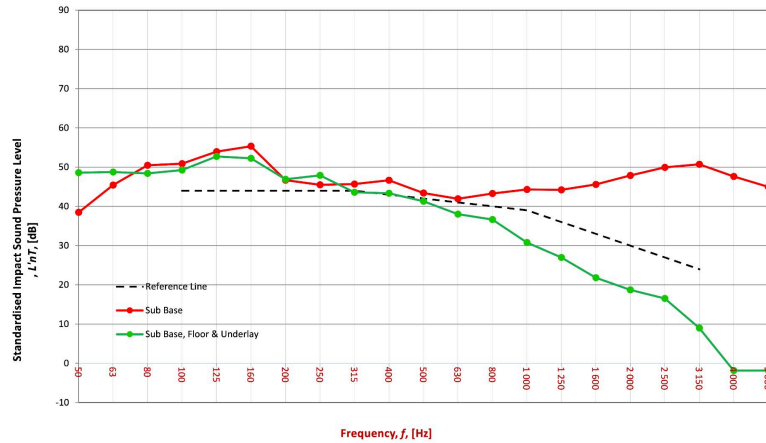
Room Width : 5 m  
 Floor Length : 8 m  
 Dimensions Area : 40.00 m<sup>2</sup>

Sample Width : 1 m  
 Dimensions Length : 1 m  
 Area : 1 m<sup>2</sup>

Receiver Rm	Location	Width	Length	Area	Height	Volume
5	en/Dining/Living directly t	5	8	40.00	2.7	108.00

Room Surfaces		
Walls	Floor	Ceiling
Plasterboard	Timber	Plasterboard

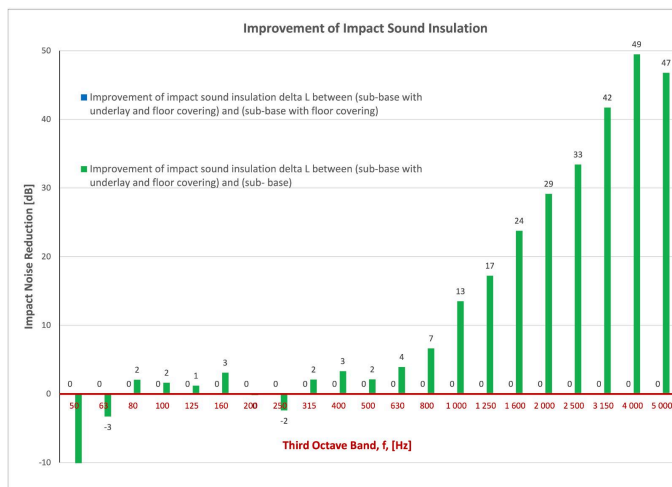
Frequency f Hz	L'nT (one-third octave) dB		
	Sub Base	Sub Base Floor	Sub Base Floor Underlay
50	38.5	N/A	48.6
63	45.4	N/A	48.8
80	50.4	N/A	48.4
100	50.9	N/A	49.2
125	53.9	N/A	52.7
160	55.3	N/A	52.2
200	46.7	N/A	46.9
250	45.5	N/A	47.9
315	45.7	N/A	43.6
400	46.6	N/A	43.3
500	43.4	N/A	41.3
630	41.9	N/A	38.0
800	43.3	N/A	36.6
1000	44.3	N/A	30.8
1250	44.2	N/A	27.0
1600	45.6	N/A	21.8
2000	47.9	N/A	18.7
2500	49.9	N/A	16.5
3150	50.7	N/A	9.0
4000	47.6	N/A	-1.9
5000	44.9	N/A	-1.8



Sub Base		
L'nT,w	55	AS ISO 717.2 - 2004
CI	-9	AS ISO 717.2 - 2004
CI(50-2500)	-9	AS ISO 717.2 - 2004
CI(63-2000)	-9	AS ISO 717.2 - 2004
AAAC★	3 Star	AAAC Guideline
FIIC	49	ASTM E1007-14

Sub Base & Floor		
L'nT,w	N/A	AS ISO 717.2 - 2004
CI	N/A	AS ISO 717.2 - 2004
CI(50-2500)	N/A	AS ISO 717.2 - 2004
CI(63-2000)	N/A	AS ISO 717.2 - 2004
AAAC★	N/A	AAAC Guideline
FIIC	N/A	ASTM E1007-14

Sub Base, Floor & Underlay		
L'nT,w	42	AS ISO 717.2 - 2004
CI	1	AS ISO 717.2 - 2004
CI(50-2500)	2	AS ISO 717.2 - 2004
CI(63-2000)	2	AS ISO 717.2 - 2004
AAAC★	5 Star	AAAC Guideline
FIIC	67	ASTM E1007-14



### Definitions of Noise Metrics

**FIIC:**  
 Field Impact Insulation Class is a single-number rating of how well a floor system attenuates impact type sounds, such as footsteps. Calculated from third-octave band normalised impact sound pressure level data and referenced to 10 m<sup>2</sup> as described in ASTM E989. The higher the single-number rating, the better its impact insulation performance.

**L'nT,w:**  
 The Weighted Standardised Impact Sound Pressure Level when measured in situ referenced to a reverberation time (RT60) of 0.5 seconds. Used by the AAAC to determine their respective Star Rating.

**CI:**  
 Spectrum adaption term is a low frequency correction factor. Typically for massive floors such as concrete, the values are about zero while for timber/joint floors CI is positive because of the low resonant frequencies. Considers frequency range between 100- and 2500 Hz.

**CI(50-2500):**  
 Same as above, but for the frequency range 50 -2500 Hz.

**CI(125-2000):**  
 Same as above, but for the frequency range 125 -2000 Hz.

AAAC Star R.	2	3	4	5	6
L'nT,w	65	55	50	45	40
FIIC	45	55	60	65	70
Comments	Below BCA 62	Clearly Audible	Audible	Barely Inaudible	Normally Inaudible

Acoustic test results provided are only indicative of acoustic performance and are site specific, so outcomes may vary from building to building. Royal Floors provides this information for guidance and indicative purposes only and does not guarantee any specific acoustic outcome. Indicative testing has been completed by acoustic engineers according to AS/NZS ISO 140.7:2006 and the rating has been determined as per AS ISO 717.2-2004.

Please visit [royalfloors.com.au](http://royalfloors.com.au) for the most up-to-date version of Warranty, Installation, and care and maintenance guidelines. All technical data and testing are based on samples and are for indicative purposes only. Version: April 2026

# Part 7: Acoustic Test (Royal 14/2mm Oak + 3mm EVERQUIET IXPE Underlay)

System Tested	$L'_{nTw}$ <sup>3</sup>	FIIC <sup>4, 5</sup>	AAAC <sup>6</sup>
Bare Concrete Floor (ECFS only) - for comparison purposes only	55	49	3
Royal 14/2mm Oak + 3mm Everquiet IXPE Underlay	43	63	5

## FIELD MEASUREMENTS OF IMPACT SOUND INSULATION OF FLOORS



Date of Test : Tuesday, 29 March 2022  
 Project No. : 3523  
 Testing Company : Koikas Acoustics  
 Checked by : Nick Koikas  
 Place of Test: Residential apartments in Sydney, NSW  
 Client : Everfloor / EverQuiet  
 Client Address : -

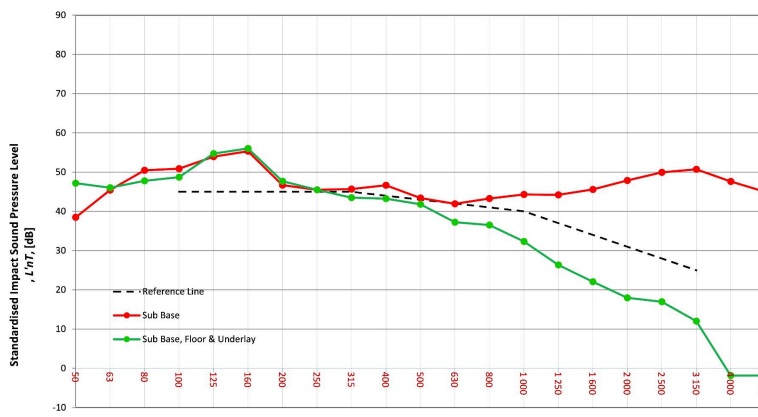
Description	Thickness (mm)	Density (S)
14 mm engineered flooring	14	--
3 mm EverQuiet IXPE underlay	3	--
Floor Concrete slab	180-200	--
System Suspended ceiling	80-150	--

Room Width : 5 m  
 Floor Length : 8 m  
 Dimensions Area : 40.00 m<sup>2</sup>

Sample Width : 1 m  
 Dimensions Length : 1 m  
 Area : 1 m<sup>2</sup>

Receiver Rm	Location	Width	Length	Area	Height	Volume	Room Surfaces		
							Walls	Floor	Ceiling
5	en/Dining/Living directly t	5	8	40.00	2.7	108.00	Plasterboard	Timber	Plasterboard

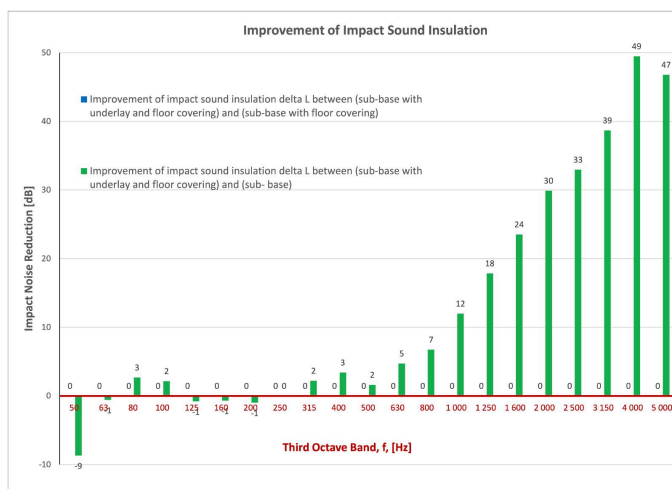
Frequency f Hz	L'nT (one-third octave) dB		
	Sub Base	Sub Base Floor	Sub Base Floor Underlay
50	38.5	N/A	47.2
63	45.4	N/A	46.0
80	50.4	N/A	47.8
100	50.9	N/A	48.7
125	53.9	N/A	54.7
160	55.3	N/A	56.0
200	46.7	N/A	47.7
250	45.5	N/A	45.5
315	45.7	N/A	43.5
400	46.6	N/A	43.2
500	43.4	N/A	41.8
630	41.9	N/A	36.5
800	43.3	N/A	37.2
1000	44.3	N/A	32.3
1250	44.2	N/A	26.3
1600	45.6	N/A	22.1
2000	47.9	N/A	18.0
2500	49.9	N/A	17.0
3150	50.7	N/A	12.0
4000	47.6	N/A	-1.9
5000	44.9	N/A	-1.8



Sub Base		
L'nT,w	55	AS ISO 717.2 - 2004
CI	-9	AS ISO 717.2 - 2004
CI(50-2500)	-9	AS ISO 717.2 - 2004
CI(63-2000)	-9	AS ISO 717.2 - 2004
AAAC★	3 Star	AAAC Guideline
FIIC	49	ASTM E1007-14

Sub Base & Floor		
L'nT,w	N/A	AS ISO 717.2 - 2004
CI	N/A	AS ISO 717.2 - 2004
CI(50-2500)	N/A	AS ISO 717.2 - 2004
CI(63-2000)	N/A	AS ISO 717.2 - 2004
AAAC★	N/A	AAAC Guideline
FIIC	N/A	ASTM E1007-14

Sub Base, Floor & Underlay		
L'nT,w	43	AS ISO 717.2 - 2004
CI	2	AS ISO 717.2 - 2004
CI(50-2500)	2	AS ISO 717.2 - 2004
CI(63-2000)	2	AS ISO 717.2 - 2004
AAAC★	5 Star	AAAC Guideline
FIIC	63	ASTM E1007-14



### Definitions of Noise Metrics

**FIIC:**  
 Field Impact Insulation Class is a single-number rating of how well a floor system attenuates impact type sounds, such as footsteps. Calculated from third-octave band normalised impact sound pressure level data and referenced to 10 m<sup>2</sup> as described in ASTM E989. The higher the single-number rating, the better its impact insulation performance.

**L'nT,w:**  
 The Weighted Standardised Impact Sound Pressure Level when measured in situ referenced to a reverberation time (RT60) of 0.5 seconds. Used by the AAAC to determine their respective Star Rating.

**CI:**  
 Spectrum adaption term is a low frequency correction factor. Typically for massive floors such as concrete, the values are about zero while for timber joint floors CI is positive because of the low resonant frequencies. Considers frequency range between 100- and 2500 Hz.

**CI(50-2500):**  
 Same as above, but for the frequency range 50 -2500 Hz.

**CI(125-2000):**  
 Same as above, but for the frequency range 125 -2000 Hz.

AAAC Star R.	2	3	4	5	6
L'nT,w	65	55	50	45	40
FIIC	45	55	60	65	70
Comments	Below BCA 62	Clearly Audible	Audible	Barely Inaudible	Normally Inaudible

Acoustic test results provided are only indicative of acoustic performance and are site specific, so outcomes may vary from building to building. Royal Floors provides this information for guidance and indicative purposes only and does not guarantee any specific acoustic outcome. Indicative testing has been completed by acoustic engineers according to AS/NZS ISO 140.7:2006 and the rating has been determined as per AS ISO 717.2-2004.

Please visit [royalfloors.com.au](http://royalfloors.com.au) for the most up-to-date version of Warranty, Installation, and care and maintenance guidelines. All technical data and testing are based on samples and are for indicative purposes only. Version: April 2026

# Part 7: Acoustic Test (Royal 14/2mm Oak + EQ312 3mm Rubber Underlay)

System Tested	$L'_{nTw}$ <sup>3</sup>	FIIC <sup>4, 5</sup>	AAAC <sup>6</sup>
Bare Concrete Floor (ECFS only) - for comparison purposes only	55	49	3
Royal 14/2mm Oak +EQ312 3mm Rubber Underlay	43	63	5

## FIELD MEASUREMENTS OF IMPACT SOUND INSULATION OF FLOORS



Date of Test : Tuesday, 29 March 2022  
 Project No. : 3523  
 Testing Company : Koikas Acoustics  
 Checked by : Nick Koikas  
 Place of Test: Residential apartments in Sydney, NSW  
 Client : Everfloor / EverQuiet  
 Client Address : -

Description	Thickness (mm)	Density (S)
14 mm engineered flooring	14	--
3 mm EverQuiet Rubber EQ312 underlay	3	--
Concrete slab	180-200	--
Suspended ceiling	80-150	--

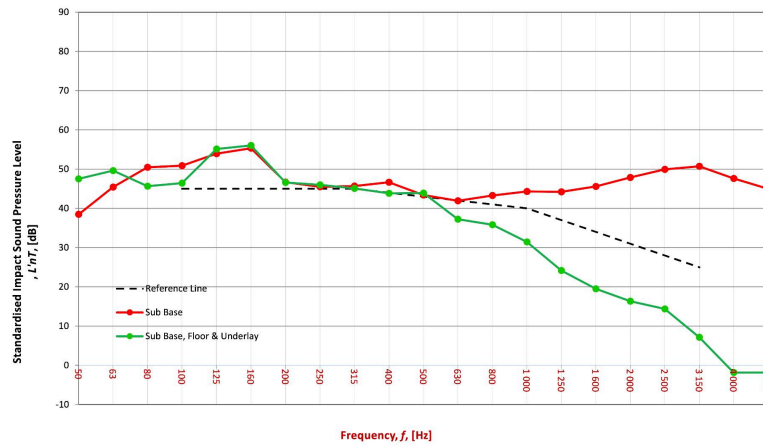
Room Width : 5 m  
 Floor Length : 8 m  
 Dimensions Area : 40.00 m<sup>2</sup>

Sample Width : 1 m  
 Dimensions Length : 1 m  
 Area : 1 m<sup>2</sup>

Receiver Rm	Location	Width	Length	Area	Height	Volume
5	en/Dining/Living directly t	5	8	40.00	2.7	108.00

Room Surfaces		
Walls	Floor	Ceiling
Plasterboard	Timber	Plasterboard

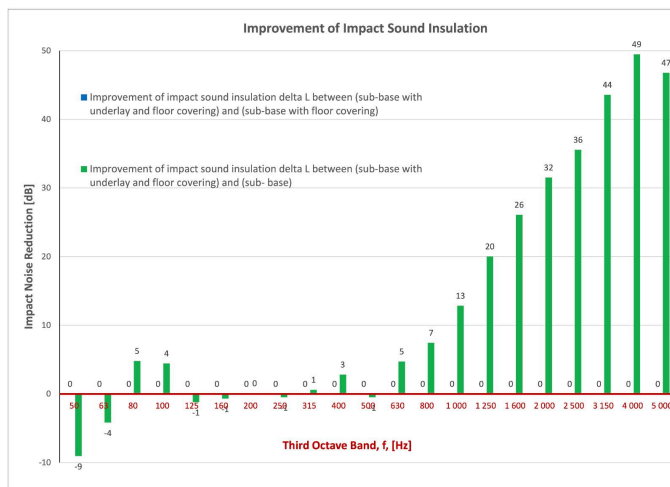
Frequency f Hz	L'nT (one-third octave) dB		
	Sub Base	Sub Base Floor	Sub Base Floor Underlay
50	38.5	N/A	47.5
63	45.4	N/A	49.6
80	50.4	N/A	45.7
100	50.9	N/A	46.4
125	53.9	N/A	55.1
160	55.3	N/A	56.0
200	46.7	N/A	46.6
250	45.5	N/A	46.0
315	45.7	N/A	45.1
400	46.6	N/A	43.8
500	43.4	N/A	43.9
630	41.9	N/A	37.2
800	43.3	N/A	35.8
1000	44.3	N/A	31.5
1250	44.2	N/A	24.2
1600	45.6	N/A	19.5
2000	47.9	N/A	16.3
2500	49.9	N/A	14.4
3150	50.7	N/A	7.1
4000	47.6	N/A	-1.9
5000	44.9	N/A	-1.8



Sub Base		
L'nT,w	55	AS ISO 717.2 - 2004
CI	-9	AS ISO 717.2 - 2004
CI(50-2500)	-9	AS ISO 717.2 - 2004
CI(63-2000)	-9	AS ISO 717.2 - 2004
AAAC★	3 Star	AAAC Guideline
FIIC	49	ASTM E1007-14

Sub Base & Floor		
L'nT,w	N/A	AS ISO 717.2 - 2004
CI	N/A	AS ISO 717.2 - 2004
CI(50-2500)	N/A	AS ISO 717.2 - 2004
CI(63-2000)	N/A	AS ISO 717.2 - 2004
AAAC★	N/A	AAAC Guideline
FIIC	N/A	ASTM E1007-14

Sub Base, Floor & Underlay		
L'nT,w	43	AS ISO 717.2 - 2004
CI	2	AS ISO 717.2 - 2004
CI(50-2500)	3	AS ISO 717.2 - 2004
CI(63-2000)	2	AS ISO 717.2 - 2004
AAAC★	5 Star	AAAC Guideline
FIIC	63	ASTM E1007-14



### Definitions of Noise Metrics

**FIIC:**  
 Field Impact Insulation Class is a single-number rating of how well a floor system attenuates impact type sounds, such as footsteps. Calculated from third-octave band normalised impact sound pressure level data and referenced to 10 m<sup>2</sup> as described in ASTM E989. The higher the single-number rating, the better its impact insulation performance.

**L'nT,w:**  
 The Weighted Standardised Impact Sound Pressure Level when measured in situ referenced to a reverberation time (RT60) of 0.5 seconds. Used by the AAAC to determine their respective Star Rating.

**CI:**  
 Spectrum adaption term is a low frequency correction factor. Typically for massive floors such as concrete, the values are about zero while for timber/joint floors CI is positive because of the low resonant frequencies. Considers frequency range between 100- and 2500 Hz.

**CI(50-2500):**  
 Same as above, but for the frequency range 50 -2500 Hz.

**CI(125-2000):**  
 Same as above, but for the frequency range 125 -2000 Hz.

AAAC Star R.	2	3	4	5	6
L'nT,w	65	55	50	45	40
FIIC	45	55	60	65	70
Comments	Below BCA 62	Clearly Audible	Audible	Barely Inaudible	Normally Inaudible

Acoustic test results provided are only indicative of acoustic performance and are site specific, so outcomes may vary from building to building. Royal Floors provides this information for guidance and indicative purposes only and does not guarantee any specific acoustic outcome. Indicative testing has been completed by acoustic engineers according to AS/NZS ISO 140.7:2006 and the rating has been determined as per AS ISO 717.2-2004.

Please visit [royalfloors.com.au](http://royalfloors.com.au) for the most up-to-date version of Warranty, Installation, and care and maintenance guidelines. All technical data and testing are based on samples and are for indicative purposes only. Version: April 2026

# Part 7: Acoustic Test (Royal 14/2mm Oak + EQ512 5mm Rubber Underlay)

System Tested	$L'_{nTw}$ <sup>3</sup>	FIIC <sup>4, 5</sup>	AAAC <sup>6</sup>
Bare Concrete Floor (ECFS only) - for comparison purposes only	55	49	3
Royal 14/2mm Oak +EQ512 5mm Rubber Underlay	44	62	5

## FIELD MEASUREMENTS OF IMPACT SOUND INSULATION OF FLOORS



Date of Test : Tuesday, 29 March 2022  
 Project No. : 3523  
 Testing Company : Koikas Acoustics  
 Checked by : Nick Koikas  
 Place of Test: Residential apartments in Sydney, NSW  
 Client : Everfloor / EverQuiet  
 Client Address : -

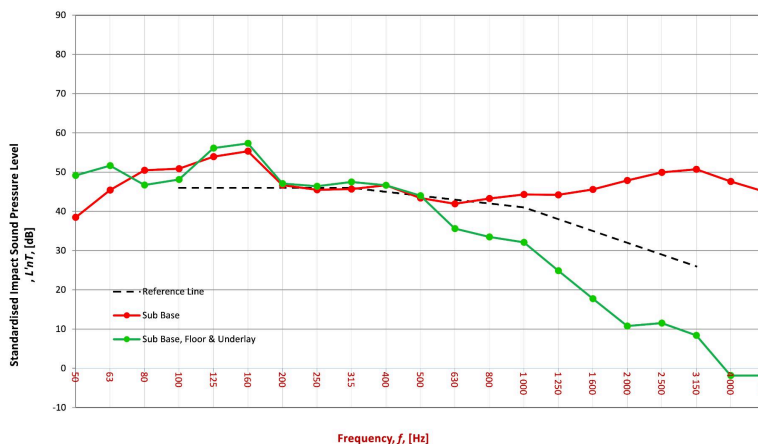
Description	Thickness (mm)	Density (S)
14 mm engineered flooring	14	--
5 mm EverQuiet Rubber EQ512 underlay	5	--
Concrete slab	180-200	--
Suspended ceiling	80-150	--

Room Width : 5 m  
 Floor Length : 8 m  
 Dimensions Area : 40.00 m<sup>2</sup>

Sample Width : 1 m  
 Dimensions Length : 1 m  
 Area : 1 m<sup>2</sup>

Receiver Rm	Location	Width	Length	Area	Height	Volume	Room Surfaces		
							Walls	Floor	Ceiling
en/Dining/Living directly l		5	8	40.00	2.7	108.00	Plasterboard	Timber	Plasterboard

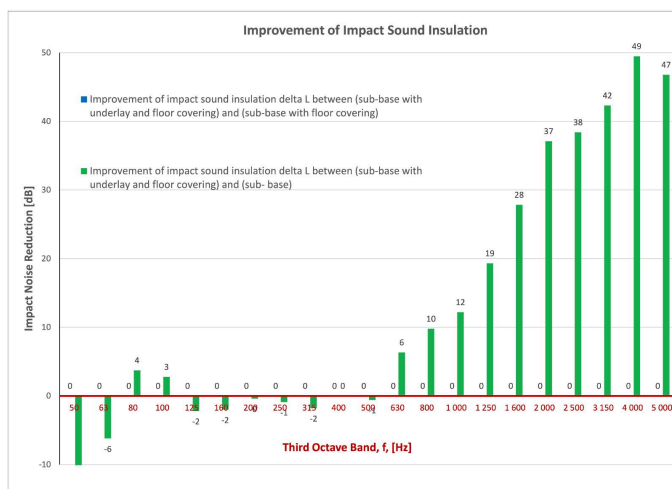
Frequency f Hz	L'nT (one-third octave) dB		
	Sub Base	Sub Base Floor	Sub Base Floor Underlay
50	38.5	N/A	49.2
63	45.4	N/A	51.6
80	50.4	N/A	46.7
100	50.9	N/A	48.1
125	53.9	N/A	56.1
160	55.3	N/A	57.3
200	46.7	N/A	47.1
250	45.5	N/A	46.4
315	45.7	N/A	47.5
400	46.6	N/A	46.6
500	43.4	N/A	44.0
630	41.9	N/A	33.5
800	43.3	N/A	35.6
1000	44.3	N/A	32.1
1250	44.2	N/A	24.9
1600	45.6	N/A	17.7
2000	47.9	N/A	10.8
2500	49.9	N/A	11.5
3150	50.7	N/A	8.4
4000	47.6	N/A	-1.9
5000	44.9	N/A	-1.8



Sub Base		
L'nT,w	55	AS ISO 717.2 - 2004
CI	-9	AS ISO 717.2 - 2004
CI(50-2500)	-9	AS ISO 717.2 - 2004
CI(63-2000)	-9	AS ISO 717.2 - 2004
AAAC★	3 Star	AAAC Guideline
FIIC	49	ASTM E1007-14

Sub Base & Floor		
L'nT,w	N/A	AS ISO 717.2 - 2004
CI	N/A	AS ISO 717.2 - 2004
CI(50-2500)	N/A	AS ISO 717.2 - 2004
CI(63-2000)	N/A	AS ISO 717.2 - 2004
AAAC★	N/A	AAAC Guideline
FIIC	N/A	ASTM E1007-14

Sub Base, Floor & Underlay		
L'nT,w	44	AS ISO 717.2 - 2004
CI	2	AS ISO 717.2 - 2004
CI(50-2500)	3	AS ISO 717.2 - 2004
CI(63-2000)	3	AS ISO 717.2 - 2004
AAAC★	5 Star	AAAC Guideline
FIIC	62	ASTM E1007-14



### Definitions of Noise Metrics

**FIIC:**  
 Field Impact Insulation Class is a single-number rating of how well a floor system attenuates impact type sounds, such as footsteps. Calculated from third-octave band normalised impact sound pressure level data and referenced to 10 m<sup>2</sup> as described in ASTM E989. The higher the single-number rating, the better its impact insulation performance.

**L'nT,w:**  
 The Weighted Standardised Impact Sound Pressure Level when measured in situ referenced to a reverberation time (RT60) of 0.5 seconds. Used by the AAAC to determine their respective Star Rating.

**CI:**  
 Spectrum adaption term is a low frequency correction factor. Typically for massive floors such as concrete, the values are about zero while for timber joint floors CI is positive because of the low resonant frequencies. Considers frequency range between 100- and 2500 Hz.

**CI(50-2500):**  
 Same as above, but for the frequency range 50 -2500 Hz.

**CI(125-2000):**  
 Same as above, but for the frequency range 125 -2000 Hz.

AAAC Star R.	2	3	4	5	6
L'nT,w	65	55	50	45	40
FIIC	45	55	60	65	70
Comments	Below BCA 62	Clearly Audible	Audible	Barely Inaudible	Normally Inaudible

Acoustic test results provided are only indicative of acoustic performance and are site specific, so outcomes may vary from building to building. Royal Floors provides this information for guidance and indicative purposes only and does not guarantee any specific acoustic outcome. Indicative testing has been completed by acoustic engineers according to AS/NZS ISO 140.7:2006 and the rating has been determined as per AS ISO 717.2-2004.

Please visit [royalfloors.com.au](http://royalfloors.com.au) for the most up-to-date version of Warranty, Installation, and care and maintenance guidelines. All technical data and testing are based on samples and are for indicative purposes only. Version: April 2026

# Part 7: Acoustic Test (Royal 14/2mm Oak + EQ515 5mm Rubber Underlay)

System Tested	$L'_{nTw}$ <sup>3</sup>	FIIC <sup>4, 5</sup>	AAAC <sup>6</sup>
Bare Concrete Floor (ECFS only) - for comparison purposes only	55	49	3
Royal 14/2mm Oak + EQ515 5mm Rubber Underlay	43	63	5

## FIELD MEASUREMENTS OF IMPACT SOUND INSULATION OF FLOORS



Date of Test : Tuesday, 29 March 2022  
 Project No. : 3523  
 Testing Company : Koikas Acoustics  
 Checked by : Nick Koikas  
 Place of Test: Residential apartments in Sydney, NSW  
 Client : Everfloor / EverQuiet  
 Client Address : -

Description	Thickness (mm)	Density (S)
14 mm engineered flooring	14	--
5 mm EverQuiet Rubber EQ515 underlay	5	--
Concrete slab	180-200	--
Suspended ceiling	80-150	--

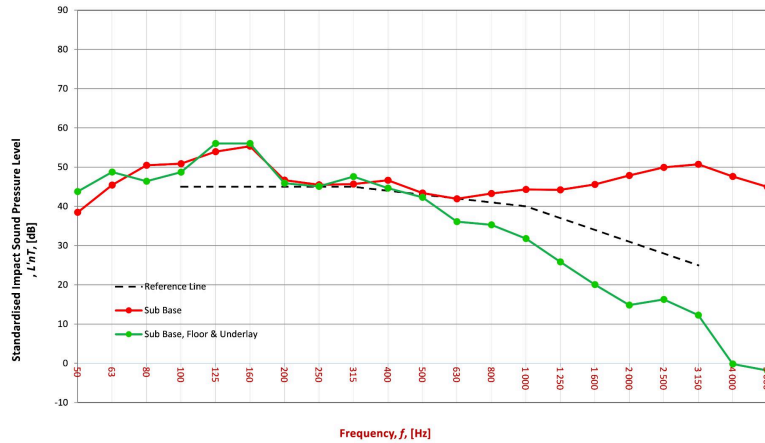
Room Width : 5 m  
 Floor Length : 8 m  
 Dimensions Area : 40.00 m<sup>2</sup>

Sample Width : 1 m  
 Dimensions Length : 1 m  
 Area : 1 m<sup>2</sup>

Receiver Rm	Location	Width	Length	Area	Height	Volume
5	en/Dining/Living directly t	5	8	40.00	2.7	108.00

Room Surfaces		
Walls	Floor	Ceiling
Plasterboard	Timber	Plasterboard

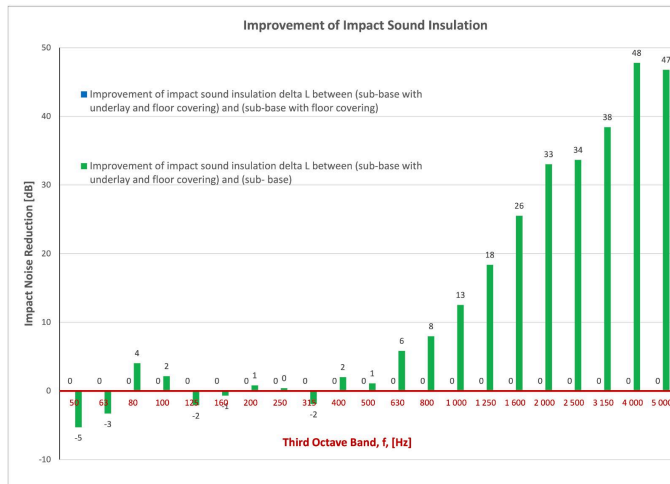
Frequency f Hz	L'nT (one-third octave) dB		
	Sub Base	Sub Base Floor	Sub Base Floor Underlay
50	38.5	N/A	43.8
63	45.4	N/A	48.8
80	50.4	N/A	46.4
100	50.9	N/A	48.7
125	53.9	N/A	56.0
160	55.3	N/A	56.0
200	46.7	N/A	45.9
250	45.5	N/A	45.1
315	45.7	N/A	47.6
400	46.6	N/A	44.6
500	43.4	N/A	42.3
630	41.9	N/A	36.1
800	43.3	N/A	35.3
1000	44.3	N/A	31.8
1250	44.2	N/A	25.8
1600	45.6	N/A	20.1
2000	47.9	N/A	14.8
2500	49.9	N/A	16.3
3150	50.7	N/A	12.3
4000	47.6	N/A	-0.2
5000	44.9	N/A	-1.8



Sub Base	
L'nT,w	55
CI	-9
CI(50-2500)	-9
CI(63-2000)	-9
AAAC★	3 Star
FIIC	49

Sub Base & Floor	
L'nT,w	N/A
CI	N/A
CI(50-2500)	N/A
CI(63-2000)	N/A
AAAC★	N/A
FIIC	N/A

Sub Base, Floor & Underlay	
L'nT,w	43
CI	2
CI(50-2500)	3
CI(63-2000)	3
AAAC★	5 Star
FIIC	63



### Definitions of Noise Metrics

**FIIC:**  
 Field Impact Insulation Class is a single-number rating of how well a floor system attenuates impact type sounds, such as footsteps. Calculated from third-octave band normalised impact sound pressure level data and referenced to 10 m<sup>2</sup> as described in ASTM E989. The higher the single-number rating, the better its impact insulation performance.

**L'nT,w:**  
 The Weighted Standardised Impact Sound Pressure Level when measured in situ referenced to a reverberation time (RT60) of 0.5 seconds. Used by the AAAC to determine their respective Star Rating.

**CI:**  
 Spectrum adaption term is a low frequency correction factor. Typically for massive floors such as concrete, the values are about zero while for timber/joint floors CI is positive because of the low resonant frequencies. Considers frequency range between 100- and 2500 Hz.

**CI(50-2500):**  
 Same as above, but for the frequency range 50 -2500 Hz.

**CI(125-2000):**  
 Same as above, but for the frequency range 125 -2000 Hz.

AAAC Star R.	2	3	4	5	6
L'nT,w	65	55	50	45	40
FIIC	45	55	60	65	70
Comments	Below BCA 62	Clearly Audible	Audible	Barely Inaudible	Normally Inaudible

Acoustic test results provided are only indicative of acoustic performance and are site specific, so outcomes may vary from building to building. Royal Floors provides this information for guidance and indicative purposes only and does not guarantee any specific acoustic outcome. Indicative testing has been completed by acoustic engineers according to AS/NZS ISO 140.7:2006 and the rating has been determined as per AS ISO 717.2-2004.

Please visit [royalfloors.com.au](http://royalfloors.com.au) for the most up-to-date version of Warranty, Installation, and care and maintenance guidelines. All technical data and testing are based on samples and are for indicative purposes only. Version: April 2026

# Part 7: Acoustic Test (Royal 14/2mm Oak + EQ1012 10mm Rubber Underlay)

System Tested	$L'_{nTw}$ <sup>3</sup>	FIIC <sup>4, 5</sup>	AAAC <sup>6</sup>
Bare Concrete Floor (ECFS only) - for comparison purposes only	55	49	3
Royal 14/2mm Oak + EQ1012 10mm Rubber Underlay	44	63	5

## FIELD MEASUREMENTS OF IMPACT SOUND INSULATION OF FLOORS



Date of Test : Tuesday, 29 March 2022  
 Project No. : 3523  
 Testing Company : Koikas Acoustics  
 Checked by : Nick Koikas  
 Place of Test: Residential apartments in Sydney, NSW  
 Client : Everfloor / EverQuiet  
 Client Address : -

Description	Thickness (mm)	Density (S)
14 mm engineered flooring	14	--
10 mm EverQuiet Rubber EQ1012 underlay	10	--
Concrete slab	180-200	--
Suspended ceiling	80-150	--

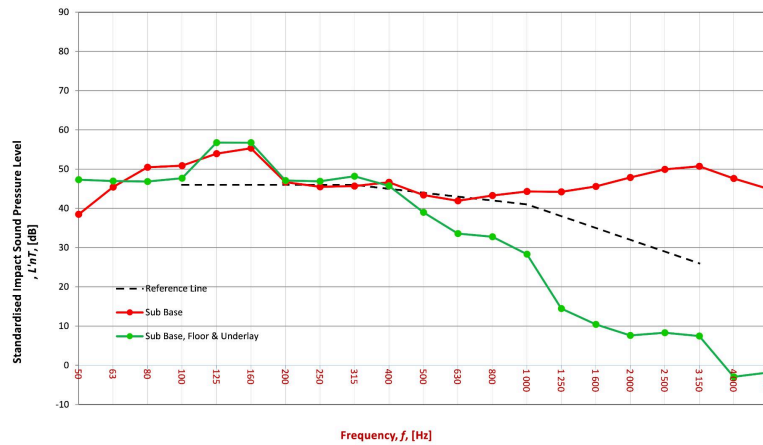
Room Width : 5 m  
 Floor Length : 8 m  
 Dimensions Area : 40.00 m<sup>2</sup>

Sample Width : 1 m  
 Dimensions Length : 1 m  
 Area : 1 m<sup>2</sup>

Receiver Rm	Location	Width	Length	Area	Height	Volume
5	en/Dining/Living directly t	5	8	40.00	2.7	108.00

Room Surfaces		
Walls	Floor	Ceiling
Plasterboard	Timber	Plasterboard

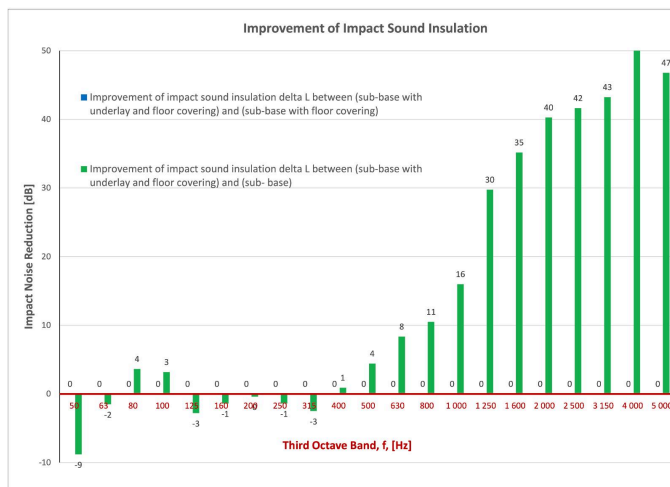
Frequency f Hz	L'nT (one-third octave) dB		
	Sub Base	Sub Base Floor	Sub Base Floor Underlay
50	38.5	N/A	47.3
63	45.4	N/A	47.0
80	50.4	N/A	46.8
100	50.9	N/A	47.7
125	53.9	N/A	56.7
160	55.3	N/A	56.7
200	46.7	N/A	47.1
250	45.5	N/A	46.9
315	45.7	N/A	48.2
400	46.6	N/A	45.7
500	43.4	N/A	39.0
630	41.9	N/A	32.8
800	43.3	N/A	32.8
1000	44.3	N/A	28.3
1250	44.2	N/A	14.4
1600	45.6	N/A	10.4
2000	47.9	N/A	7.6
2500	49.9	N/A	8.3
3150	50.7	N/A	7.5
4000	47.6	N/A	-2.9
5000	44.9	N/A	-1.8



Sub Base	
L'nT,w	55
CI	-9
CI(50-2500)	-9
CI(63-2000)	-9
AAAC★	3 Star
FIIC	49

Sub Base & Floor	
L'nT,w	N/A
CI	N/A
CI(50-2500)	N/A
CI(63-2000)	N/A
AAAC★	N/A
FIIC	N/A

Sub Base, Floor & Underlay	
L'nT,w	44
CI	2
CI(50-2500)	2
CI(63-2000)	2
AAAC★	5 Star
FIIC	63



### Definitions of Noise Metrics

**FIIC:**  
 Field Impact Insulation Class is a single-number rating of how well a floor system attenuates impact type sounds, such as footsteps. Calculated from third-octave band normalised impact sound pressure level data and referenced to 10 m<sup>2</sup> as described in ASTM E989. The higher the single-number rating, the better its impact insulation performance.

**L'nT,w:**  
 The Weighted Standardised Impact Sound Pressure Level when measured in situ referenced to a reverberation time (RT60) of 0.5 seconds. Used by the AAAC to determine their respective Star Rating.

**CI:**  
 Spectrum adaption term is a low frequency correction factor. Typically for massive floors such as concrete, the values are about zero while for timber/joint floors CI is positive because of the low resonant frequencies. Considers frequency range between 100- and 2500 Hz.

**CI(50-2500):**  
 Same as above, but for the frequency range 50 -2500 Hz.

**CI(125-2000):**  
 Same as above, but for the frequency range 125 -2000 Hz.

AAAC Star R.	2	3	4	5	6
L'nT,w	65	55	50	45	40
FIIC	45	55	60	65	70
Comments	Below BCA 62	Clearly Audible	Audible	Barely Inaudible	Normally Inaudible

Acoustic test results provided are only indicative of acoustic performance and are site specific, so outcomes may vary from building to building. Royal Floors provides this information for guidance and indicative purposes only and does not guarantee any specific acoustic outcome. Indicative testing has been completed by acoustic engineers according to AS/NZS ISO 140.7:2006 and the rating has been determined as per AS ISO 717.2-2004.

Please visit [royalfloors.com.au](http://royalfloors.com.au) for the most up-to-date version of Warranty, Installation, and care and maintenance guidelines. All technical data and testing are based on samples and are for indicative purposes only. Version: April 2026

# Part 7: Acoustic Test (Royal 14/2mm Oak + EQW512 5mm Rubber Wavy Underlay)

System Tested	$L'_{nTw}$ <sup>3</sup>	FIIC <sup>4, 5</sup>	AAAC <sup>6</sup>
Bare Concrete Floor (ECFS only) - for comparison purposes only	55	49	3
Royal 14/2mm Oak + EQW512 5mm Rubber Wavy Underlay	42	64	5

## FIELD MEASUREMENTS OF IMPACT SOUND INSULATION OF FLOORS



Date of Test : Tuesday, 29 March 2022  
 Project No. : 3523  
 Testing Company : Koikas Acoustics  
 Checked by : Nick Koikas  
 Place of Test: Residential apartments in Sydney, NSW  
 Client : Everfloor / EverQuiet  
 Client Address : -

Description of Floor System	Thickness (mm)	Density (S)
14 mm engineered flooring	14	--
5 mm EverQuiet Rubber Wavy EQW512 underlay	5	--
Concrete slab	180-200	--
Suspended ceiling	80-150	--

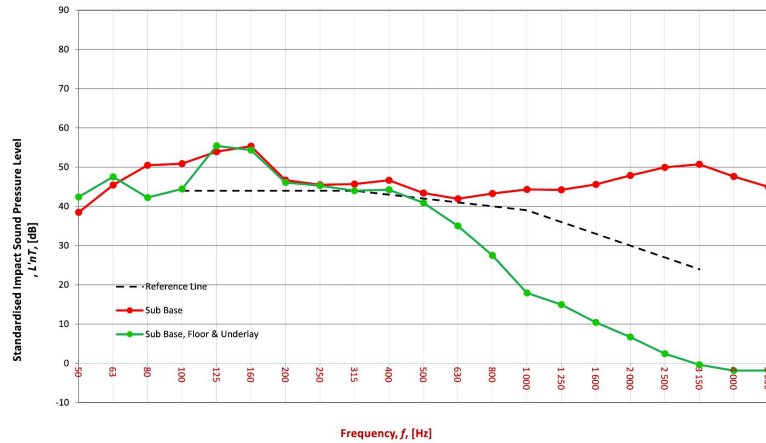
Room Width : 5 m  
 Floor Length : 8 m  
 Dimensions Area : 40.00 m<sup>2</sup>

Sample Width : 1 m  
 Dimensions Length : 1 m  
 Area : 1 m<sup>2</sup>

Receiver Rm	Location	Width	Length	Area	Height	Volume
5	en/Dining/Living directly t	5	8	40.00	2.7	108.00

Room Surfaces		
Walls	Floor	Ceiling
Plasterboard	Timber	Plasterboard

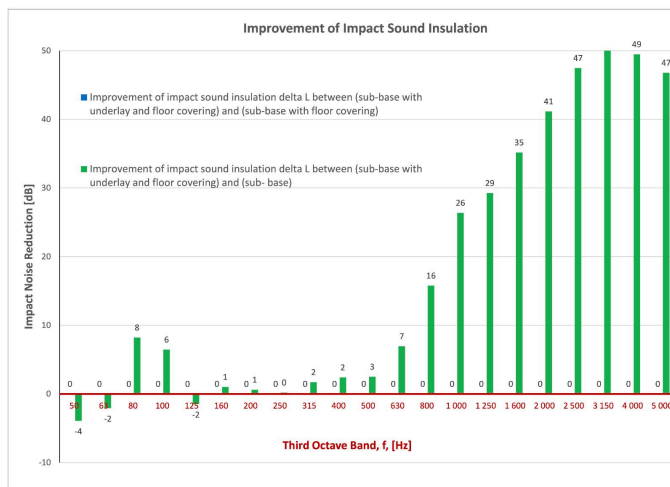
Frequency f Hz	L'nT (one-third octave) dB		
	Sub Base	Sub Base Floor	Sub Base Floor Underlay
50	38.5	N/A	42.4
63	45.4	N/A	47.5
80	50.4	N/A	42.2
100	50.9	N/A	44.4
125	53.9	N/A	55.4
160	55.3	N/A	54.3
200	46.7	N/A	46.1
250	45.5	N/A	45.3
315	45.7	N/A	44.0
400	46.6	N/A	44.2
500	43.4	N/A	40.9
630	41.9	N/A	35.0
800	43.3	N/A	27.5
1000	44.3	N/A	17.9
1250	44.2	N/A	15.0
1600	45.6	N/A	10.4
2000	47.9	N/A	6.7
2500	49.9	N/A	2.5
3150	50.7	N/A	-0.4
4000	47.6	N/A	-1.9
5000	44.9	N/A	-1.8



Sub Base		
L'nT,w	55	AS ISO 717.2 - 2004
CI	-9	AS ISO 717.2 - 2004
CI(50-2500)	-9	AS ISO 717.2 - 2004
CI(63-2000)	-9	AS ISO 717.2 - 2004
AAAC★	3 Star	AAAC Guideline
FIIC	49	ASTM E1007-14

Sub Base & Floor		
L'nT,w	N/A	AS ISO 717.2 - 2004
CI	N/A	AS ISO 717.2 - 2004
CI(50-2500)	N/A	AS ISO 717.2 - 2004
CI(63-2000)	N/A	AS ISO 717.2 - 2004
AAAC★	N/A	AAAC Guideline
FIIC	N/A	ASTM E1007-14

Sub Base, Floor & Underlay		
L'nT,w	42	AS ISO 717.2 - 2004
CI	2	AS ISO 717.2 - 2004
CI(50-2500)	2	AS ISO 717.2 - 2004
CI(63-2000)	2	AS ISO 717.2 - 2004
AAAC★	5 Star	AAAC Guideline
FIIC	64	ASTM E1007-14



### Definitions of Noise Metrics

**FIIC:**  
 Field Impact Insulation Class is a single-number rating of how well a floor system attenuates impact type sounds, such as footsteps. Calculated from third-octave band normalised impact sound pressure level data and referenced to 10 m<sup>2</sup> as described in ASTM E989. The higher the single-number rating, the better its impact insulation performance.

**L'nT,w:**  
 The Weighted Standardised Impact Sound Pressure Level when measured in situ referenced to a reverberation time (RT60) of 0.5 seconds. Used by the AAAC to determine their respective Star Rating.

**CI:**  
 Spectrum adaption term is a low frequency correction factor. Typically for massive floors such as concrete, the values are about zero while for timber joint floors CI is positive because of the low resonant frequencies. Considers frequency range between 100- and 2500 Hz.

**CI(50-2500):**  
 Same as above, but for the frequency range 50 -2500 Hz.

**CI(125-2000):**  
 Same as above, but for the frequency range 125 -2000 Hz.

AAAC Star R.	2	3	4	5	6
L'nT,w	65	55	50	45	40
FIIC	45	55	60	65	70
Comments	Below BCA 62	Clearly Audible	Audible	Barely Inaudible	Normally Inaudible

Acoustic test results provided are only indicative of acoustic performance and are site specific, so outcomes may vary from building to building. Royal Floors provides this information for guidance and indicative purposes only and does not guarantee any specific acoustic outcome. Indicative testing has been completed by acoustic engineers according to AS/NZS ISO 140.7:2006 and the rating has been determined as per AS ISO 717.2-2004.

Please visit [royalfloors.com.au](http://royalfloors.com.au) for the most up-to-date version of Warranty, Installation, and care and maintenance guidelines. All technical data and testing are based on samples and are for indicative purposes only. Version: April 2026

# Part 7: Acoustic Test (Royal 14/2mm Oak + EQW512 5mm Rubber Wavy Underlay + 2mm EVERQUIET IXPE Underlay)

System Tested	L' nTw <sup>3</sup>	FIC <sup>4,5</sup>	AAAC <sup>6</sup>
Bare Concrete Floor (ECFS only) - for comparison purposes only	55	49	3
Royal 14/2mm Oak + EQW512 5mm Rubber Wavy Underlay + 2mm EVERQUIET IXPE	43	63	5

## FIELD MEASUREMENTS OF IMPACT SOUND INSULATION OF FLOORS



Date of Test : Tuesday, 29 March 2022  
 Project No. : 3523  
 Testing Company : Koikas Acoustics  
 Checked by : Nick Koikas  
 Place of Test : Residential apartments in Sydney, NSW  
 Client : Everfloor / EverQuiet  
 Client Address : -

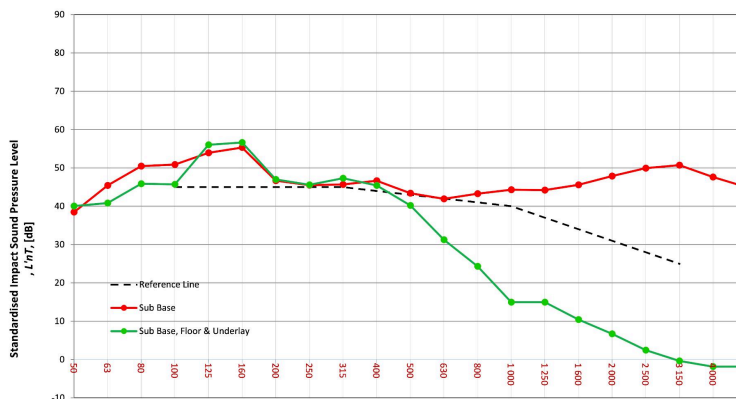
Description of Floor System	Name	Thickness (mm)	Density (SI)
14 mm engineered flooring		14	--
5 mm EverQuiet Rubber Wavy EQW512 + 2 mm EverQuiet IXPE		7	--
Concrete slab		180-200	--
Suspended ceiling		80-150	--

Room Dimensions	Width	Length	Area
Room	5 m	8 m	40.00 m <sup>2</sup>
Floor			
Dimensions			

Sample Dimensions	Width	Length	Area
Sample	1 m	1 m	1 m <sup>2</sup>
Dimensions			
Area			

Receiver Rm	Location	Width	Length	Area	Height	Volume	Room Surfaces
5	en/Dining/Living directly t	5	8	40.00	2.7	108.00	Walls: Plasterboard, Floor: Timber, Ceiling: Plasterboard

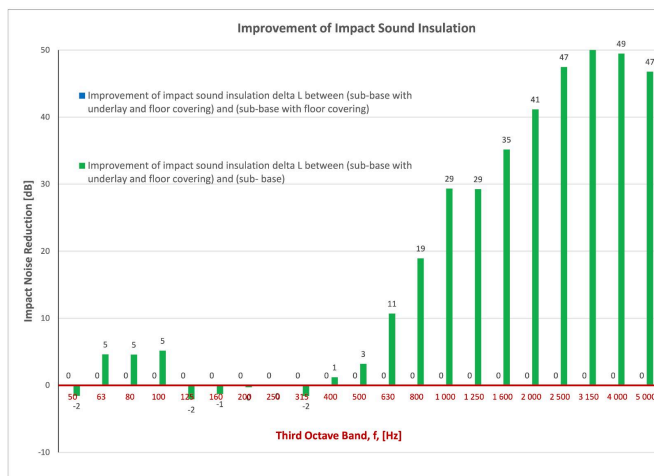
Frequency f Hz	L'nT (one-third octave) dB		
	Sub Base	Sub Base Floor	Sub Base Floor Underlay
50	38.5	N/A	40.1
63	45.4	N/A	40.8
80	50.4	N/A	45.9
100	50.9	N/A	45.7
125	53.9	N/A	56.0
160	55.3	N/A	56.6
200	46.7	N/A	47.0
250	45.5	N/A	45.6
315	45.7	N/A	47.3
400	46.6	N/A	45.4
500	43.4	N/A	40.2
630	41.9	N/A	31.2
800	43.3	N/A	24.3
1 000	44.3	N/A	14.9
1 250	44.2	N/A	15.0
1 600	45.6	N/A	10.4
2 000	47.9	N/A	6.7
2 500	49.9	N/A	2.5
3 150	50.7	N/A	-0.4
4 000	47.6	N/A	-1.9
5 000	44.9	N/A	-1.8



Sub Base	
L'nT,w	55 AS ISO 717.2 - 2004
Ci	-9 AS ISO 717.2 - 2004
Ci(50-2500)	-9 AS ISO 717.2 - 2004
Ci(63-2000)	-9 AS ISO 717.2 - 2004
AAAC★	3 Star AAAC Guideline
FIC	49 ASTM E1007-14

Sub Base & Floor	
L'nT,w	N/A AS ISO 717.2 - 2004
Ci	N/A AS ISO 717.2 - 2004
Ci(50-2500)	N/A AS ISO 717.2 - 2004
Ci(63-2000)	N/A AS ISO 717.2 - 2004
AAAC★	N/A AAAC Guideline
FIC	N/A ASTM E1007-14

Sub Base, Floor & Underlay	
L'nT,w	43 AS ISO 717.2 - 2004
Ci	2 AS ISO 717.2 - 2004
Ci(50-2500)	3 AS ISO 717.2 - 2004
Ci(63-2000)	3 AS ISO 717.2 - 2004
AAAC★	5 Star AAAC Guideline
FIC	63 ASTM E1007-14



### Definitions of Noise Metrics

**FIC:** Field Impact Insulation Class is a single-number rating of how well a floor system attenuates impact type sounds, such as footsteps. Calculated from third-octave band normalised impact sound pressure level data and referenced to 10 m<sup>2</sup> as described in ASTM E989. The higher the single-number rating, the better its impact insulation performance.

**L'nT,w:** The Weighted Standardised Impact Sound Pressure Level when measured in situ referenced to a reverberation time (RT60) of 0.5 seconds. Used by the AAAC to determine their respective Star Rating.

**Ci:** Spectrum adaption term is a low frequency correction factor. Typically for massive floors such as concrete, the values are about zero while for timber joist floors Ci is positive because of the low resonant frequencies. Considers frequency range between 100 -and 2500 Hz.

**Ci(50-2500):** Same as above, but for the frequency range 50 -2500 Hz.

**Ci(125-2000):** Same as above, but for the frequency range 125 -2000 Hz.

AAAC Star R.	2	3	4	5	6
L'nT,w	65	55	50	45	40
FIC	45	55	60	65	70
Comments	Below BCA E2	Clearly Audible	Audible	Barely Inaudible	Normally Inaudible

Acoustic test results provided are only indicative of acoustic performance and are site specific, so outcomes may vary from building to building. Royal Floors provides this information for guidance and indicative purposes only and does not guarantee any specific acoustic outcome. Indicative testing has been completed by acoustic engineers according to AS/NZS ISO 140.7:2006 and the rating has been determined as per AS ISO 717.2-2004.

Please visit [royalfloors.com.au](http://royalfloors.com.au) for the most up-to-date version of Warranty, Installation, and care and maintenance guidelines. All technical data and testing are based on samples and are for indicative purposes only. Version: April 2026

# Part 7: Acoustic Test (Royal 14/2mm Oak + EQW1012 10mm Rubber Wavy Underlay)

System Tested	$L'_{nTw}$ <sup>3</sup>	FIIC <sup>4, 5</sup>	AAAC <sup>6</sup>
Bare Concrete Floor (ECFS only) - for comparison purposes only	55	49	3
Royal 14/2mm Oak + EQW1012 10mm Rubber Wavy Underlay	43	63	5

## FIELD MEASUREMENTS OF IMPACT SOUND INSULATION OF FLOORS



Date of Test : Tuesday, 29 March 2022  
 Project No. : 3523  
 Testing Company : Koikas Acoustics  
 Checked by : Nick Koikas  
 Place of Test: Residential apartments in Sydney, NSW  
 Client : Everfloor / EverQuiet  
 Client Address : -

Description of Floor System	Name	Thickness (mm)	Density (S)
14 mm engineered flooring		14	--
10 mm EverQuiet Rubber Wavy EQW1012 underlay		10	--
Concrete slab		180-200	--
Suspended ceiling		80-150	--

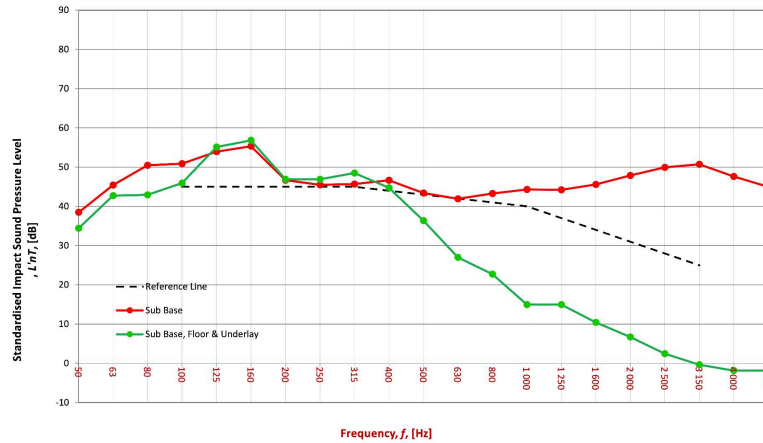
Room Width : 5 m  
 Floor Length : 8 m  
 Dimensions Area : 40.00 m<sup>2</sup>

Sample Width : 1 m  
 Dimensions Length : 1 m  
 Area : 1 m<sup>2</sup>

Receiver Rm	Location	Width	Length	Area	Height	Volume
5	en/Dining/Living directly t	5	8	40.00	2.7	108.00

Room Surfaces		
Walls	Floor	Ceiling
Plasterboard	Timber	Plasterboard

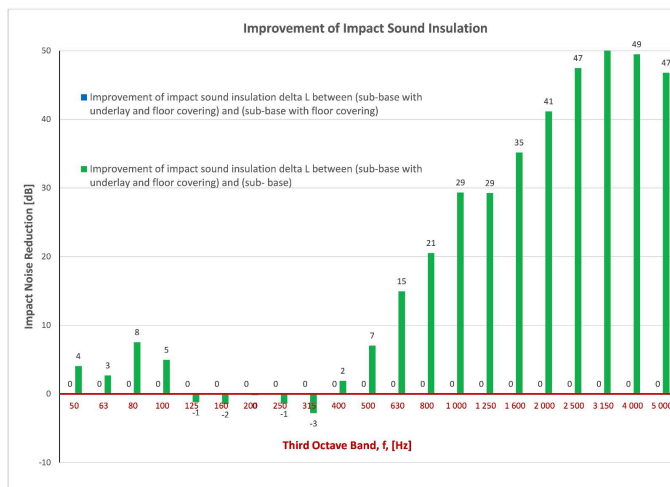
Frequency f Hz	L'nT (one-third octave) dB		
	Sub Base	Sub Base Floor	Sub Base Floor Underlay
50	38.5	N/A	34.4
63	45.4	N/A	42.7
80	50.4	N/A	42.9
100	50.9	N/A	45.9
125	53.9	N/A	55.1
160	55.3	N/A	56.8
200	46.7	N/A	46.9
250	45.5	N/A	46.9
315	45.7	N/A	48.5
400	46.6	N/A	44.7
500	43.4	N/A	36.4
630	41.9	N/A	27.0
800	43.3	N/A	22.7
1000	44.3	N/A	14.9
1250	44.2	N/A	15.0
1600	45.6	N/A	10.4
2000	47.9	N/A	6.7
2500	49.9	N/A	2.5
3150	50.7	N/A	-0.4
4000	47.6	N/A	-1.9
5000	44.9	N/A	-1.8



Sub Base		
L'nT,w	55	AS ISO 717.2 - 2004
CI	-9	AS ISO 717.2 - 2004
CI(50-2500)	-9	AS ISO 717.2 - 2004
CI(63-2000)	-9	AS ISO 717.2 - 2004
AAAC★	3 Star	AAAC Guideline
FIIC	49	ASTM E1007-14

Sub Base & Floor		
L'nT,w	N/A	AS ISO 717.2 - 2004
CI	N/A	AS ISO 717.2 - 2004
CI(50-2500)	N/A	AS ISO 717.2 - 2004
CI(63-2000)	N/A	AS ISO 717.2 - 2004
AAAC★	N/A	AAAC Guideline
FIIC	N/A	ASTM E1007-14

Sub Base, Floor & Underlay		
L'nT,w	43	AS ISO 717.2 - 2004
CI	2	AS ISO 717.2 - 2004
CI(50-2500)	2	AS ISO 717.2 - 2004
CI(63-2000)	2	AS ISO 717.2 - 2004
AAAC★	5 Star	AAAC Guideline
FIIC	63	ASTM E1007-14



### Definitions of Noise Metrics

**FIIC:**  
 Field Impact Insulation Class is a single-number rating of how well a floor system attenuates impact type sounds, such as footsteps. Calculated from third-octave band normalised impact sound pressure level data and referenced to 10 m<sup>2</sup> as described in ASTM E989. The higher the single-number rating, the better its impact insulation performance.

**L'nT,w:**  
 The Weighted Standardised Impact Sound Pressure Level when measured in situ referenced to a reverberation time (RT60) of 0.5 seconds. Used by the AAAC to determine their respective Star Rating.

**CI:**  
 Spectrum adaption term is a low frequency correction factor. Typically for massive floors such as concrete, the values are about zero while for timber/joint floors CI is positive because of the low resonant frequencies. Considers frequency range between 100- and 2500 Hz.

**CI(50-2500):**  
 Same as above, but for the frequency range 50 -2500 Hz.

**CI(125-2000):**  
 Same as above, but for the frequency range 125 -2000 Hz.

AAAC Star R.	2	3	4	5	6
L'nT,w	65	55	50	45	40
FIIC	45	55	60	65	70
Comments	Below BCA 62	Clearly Audible	Audible	Barely Inaudible	Normally Inaudible

Acoustic test results provided are only indicative of acoustic performance and are site specific, so outcomes may vary from building to building. Royal Floors provides this information for guidance and indicative purposes only and does not guarantee any specific acoustic outcome. Indicative testing has been completed by acoustic engineers according to AS/NZS ISO 140.7:2006 and the rating has been determined as per AS ISO 717.2-2004.

Please visit [royalfloors.com.au](http://royalfloors.com.au) for the most up-to-date version of Warranty, Installation, and care and maintenance guidelines. All technical data and testing are based on samples and are for indicative purposes only. Version: April 2026

## Part 7: Acoustic Test (Royal 14/2mm Oak + MS Adhesive (V Notch) )

<b>System Tested</b>	$L'_{nTw}$ <sup>3</sup>	FIIC <sup>4, 5</sup>	AAAC <sup>6</sup>
<b>Bare Concrete Floor (ECFS only) - for comparison purposes only</b>	54	50	3
<b>Royal 14/2mm Oak + MS Adhesive (V Notch)</b>	42	68	5

### FIELD MEASUREMENTS OF IMPACT SOUND INSULATION OF FLOORS



Date of Test : Thursday, 11 December 2025  
 Project No. : 3523  
 Testing Company : Koikas Acoustics  
 Checked by : James Tsevrementzis  
 Place of Test : Residential Unit in Forest Lodge (Living/Dining)  
 Client : Everfloor  
 Client Address : -

Description of Floor System	Name	Thickness (mm)	Density (S)
Engineered Timber		14	--
FLOOR+ MS Adhesive (V-Notch)		6	--
Concrete Sub Base		--	--
Suspended Plasterboard Ceiling		--	--

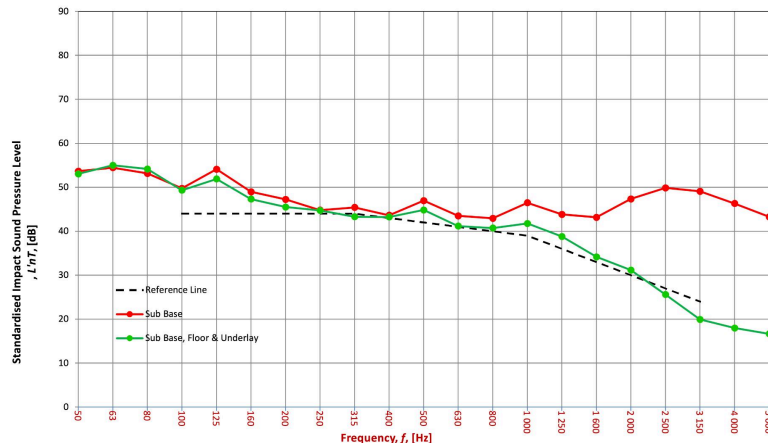
Room Width : 4.4 m  
 Floor Length : 8.2 m  
 Dimensions Area : 36.08 m<sup>2</sup>

Sample Width : 1 m  
 Dimensions Length : 1 m  
 Area : 1 m<sup>2</sup>

Receiver Rm	Location	Width	Length	Area	Height	Volume
Unit below (Living/Dining)		4.4	8.2	36.08	2.7	97.42

Room Surfaces		
Walls	Floor	Ceiling
Plasterboard	Carpet	Plasterboard

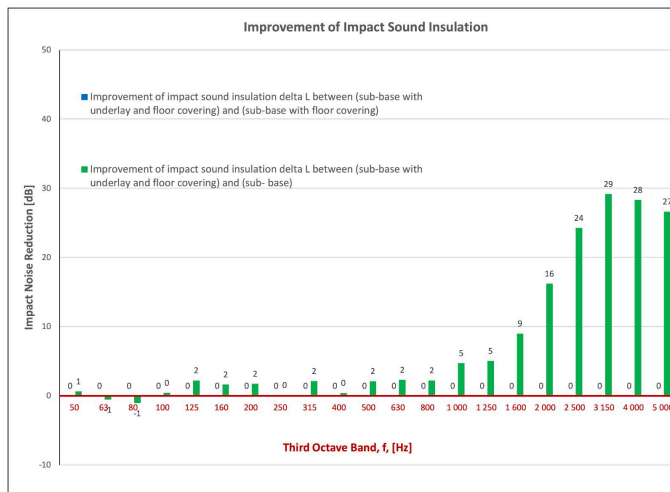
Frequency f Hz	L'nT (one-third octave) dB		
	Sub Base	Sub Base Floor	Sub Base Floor Underlay
50	53.7	NA	53.0
63	54.5	NA	55.0
80	53.1	NA	54.2
100	49.7	NA	49.3
125	54.1	NA	51.9
160	49.0	NA	47.3
200	47.2	NA	45.5
250	44.8	NA	44.7
315	45.4	NA	43.3
400	43.6	NA	43.2
500	46.9	NA	44.8
630	43.5	NA	41.2
800	42.9	NA	40.7
1 000	46.5	NA	41.8
1 250	43.8	NA	38.8
1 600	43.2	NA	34.2
2 000	47.4	NA	31.2
2 500	49.9	NA	25.6
3 150	49.1	NA	19.9
4 000	46.3	NA	18.0
5 000	43.3	NA	16.7



Sub Base	
L'nT,w	54
Ci	-9
Ci(50-2500)	-7
Ci(63-2000)	-8
AAAC★	3 Star
FIIC	50

Sub Base & Floor	
L'nT,w	NA
Ci	NA
Ci(50-2500)	NA
Ci(63-2000)	NA
AAAC★	NA
FIIC	NA

Sub Base, Floor & Underlay	
L'nT,w	42
Ci	0
Ci(50-2500)	4
Ci(63-2000)	3
AAAC★	5 Star
FIIC	68



#### Definitions of Noise Metrics

**FIIC:**  
 Field Impact Insulation Class is a single-number rating of how well a floor system attenuates impact type sounds, such as footsteps. Calculated from third-octave band normalised impact sound pressure level data and referenced to 10 m<sup>2</sup> as described in ASTM E989. The higher the single-number rating, the better its impact insulation performance.

**L'nT,w:**  
 The Weighted Standardised Impact Sound Pressure Level when measured in situ referenced to a reverberation time (RT60) of 0.5 seconds. Used by the AAAC to determine their respective Star Rating.

**Ci:**  
 Spectrum adaption term is a low frequency correction factor. Typically for massive floors such as concrete, the values are about zero while for timber joist floors Ci is positive because of the low resonant frequencies. Considers frequency range between 100 -and 2500 Hz.

**Ci(50-2500):**  
 Same as above, but for the frequency range 50 -2500 Hz.

**Ci(125-2000):**  
 Same as above, but for the frequency range 125 -2000 Hz.

AAAC Star R.	2	3	4	5	6
L'nT,w	65	55	50	45	40
FIIC	45	55	60	65	70
Comments	Below BCA 62	Clearly Audible	Audible	Barely Audible	Normally Inaudible

Acoustic test results provided are only indicative of acoustic performance and are site specific, so outcomes may vary from building to building. Royal Floors provides this information for guidance and indicative purposes only and does not guarantee any specific acoustic outcome. Indicative testing has been completed by acoustic engineers according to AS/NZS ISO 140.7:2006 and the rating has been determined as per AS ISO 717.2-2004.

Please visit [royalfloors.com.au](http://royalfloors.com.au) for the most up-to-date version of Warranty, Installation, and care and maintenance guidelines. All technical data and testing are based on samples and are for indicative purposes only. Version: April 2026