



FLOORING LINE

For more than 265 years, Villeroy&Boch products have been inspiring people to decorate their homes in accordance with their personal tastes.

Now Villeroy&Boch is entering a new realm by releasing a unique range of flooring products.

The line includes both natural-looking decors and urbane designs.

Style- and design-conscious consumers who insist on top quality will love the

Villeroy&Boch
FLOORING LINE

The magic of a walk in the forest: we've captured it in clear-cut shapes and timeless decors. Our sophisticated wood-based products combine this material's natural beauty with flawless workmanship.

Our laminate floors will excite you with their warm, aesthetic surfaces, which are both robust and easy to clean, and with the uniquely brilliant, luxurious ambience they evoke.

COUNTRY	6
CONTEMPORARY	18
HERITAGE	28
COSMOPOLITAN	36

Decors · overview	48
Technical information	50
Skirtings	52
Online Floor Studio	53
Environmental Product Declaration	55
Product specification / characteristics	56
Quality on principle · Guarantee	57



PRODUCT OVERVIEW



COUNTRY
AS BEAUTIFUL
AS NATURE.

Use class 33 · AC5
Panel 1375 × 188 × 12 mm
Box 5 panels · 1.293 m²
Pallet 56 boxes · 72.38 m²



CONTEMPORARY
ELEGANT AMBIANCE.

Use class 33 · AC5
Panel 1380 × 193 × 10 mm
Box 6 panels · 1.598 m²
Pallet 56 boxes · 89.49 m²



HERITAGE
INSPIRED
BY TRADITION.

Use class 32 · AC4
Panel 665 × 133 × 8 mm
Box 14 panels · 1.24 m²
Pallet 70 boxes · 86.68 m²



COSMOPOLITAN URBANE CHARM.

Use class 32 · AC4

Panel 1380 × 193 × 8 mm

Box 8 panels · 2.131m²

Pallet 56 boxes · 119,32m²

SURFACES

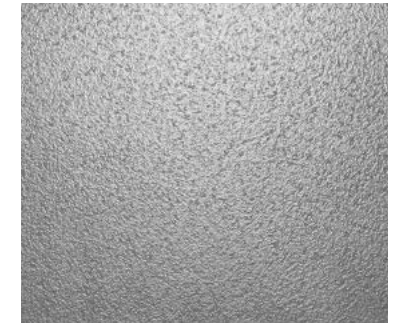
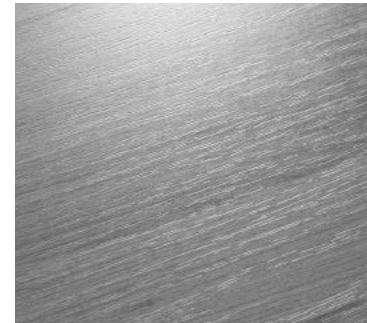
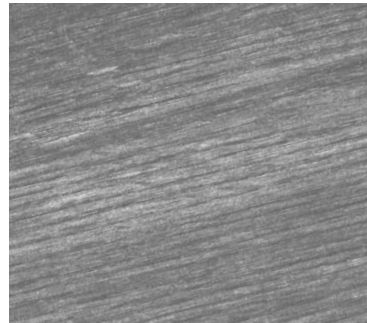
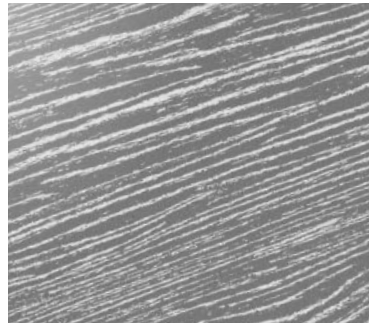
ER - genuine wood appearance due to consistence between pattern and embossing

AF - natural and vivid wood texture

ML - With a waxed look & feel

PR - typical wood structure

ST - distinctive stone appearance





No wood is like another. Knots and irregular grains give these decors their natural, authentic look.

COUNTRY is a robust floor: its hardwearing panels evoke a rustic ambience which can also compellingly underscore sleekly modern or imaginatively bold interiors.

COUNTRY AS BEAUTIFUL AS NATURE.

STONE OAK

12mm · 1-strip · ER · V4 groove

VB 1201





COUNTRY
AS BEAUTIFUL
AS NATURE.

CASTLE OAK

12mm · 1-strip · ER · V4 groove

VB 1202



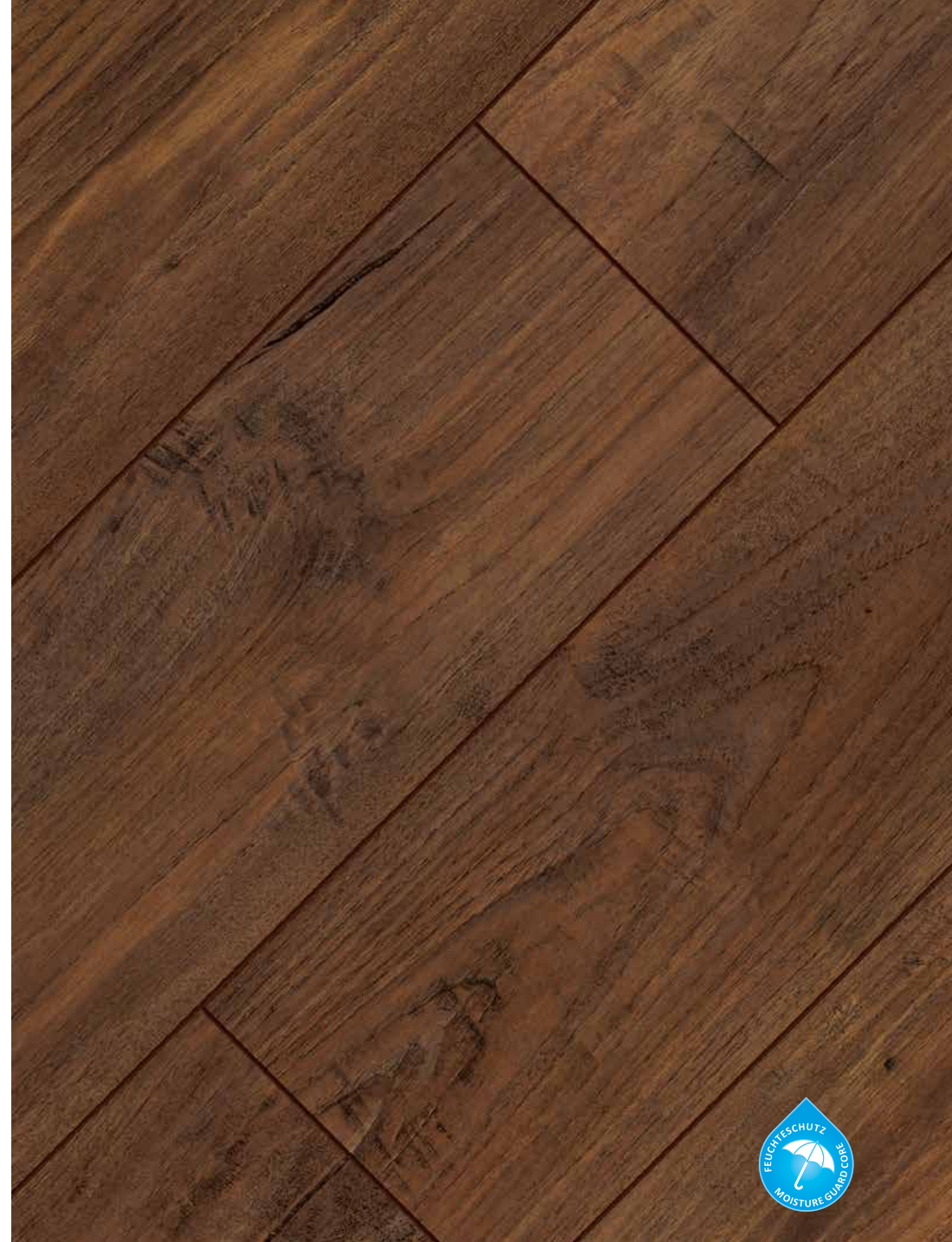


COUNTRY
AS BEAUTIFUL
AS NATURE.

MEADOW TEAK

12mm · 1-strip · ER · V4 groove

VB 1206





COUNTRY
AS BEAUTIFUL
AS NATURE.

WHITE OAK
12mm · 1-strip · ER · V4 groove

VB 1207





COUNTRY
AS BEAUTIFUL
AS NATURE.

VALLEY OAK

12mm · 1-strip · ER · V4 groove

VB 1208





COUNTRY
AS BEAUTIFUL
AS NATURE.

SHEFFIELD OAK

12mm · 1-strip · ER · V4 groove

VB 1209





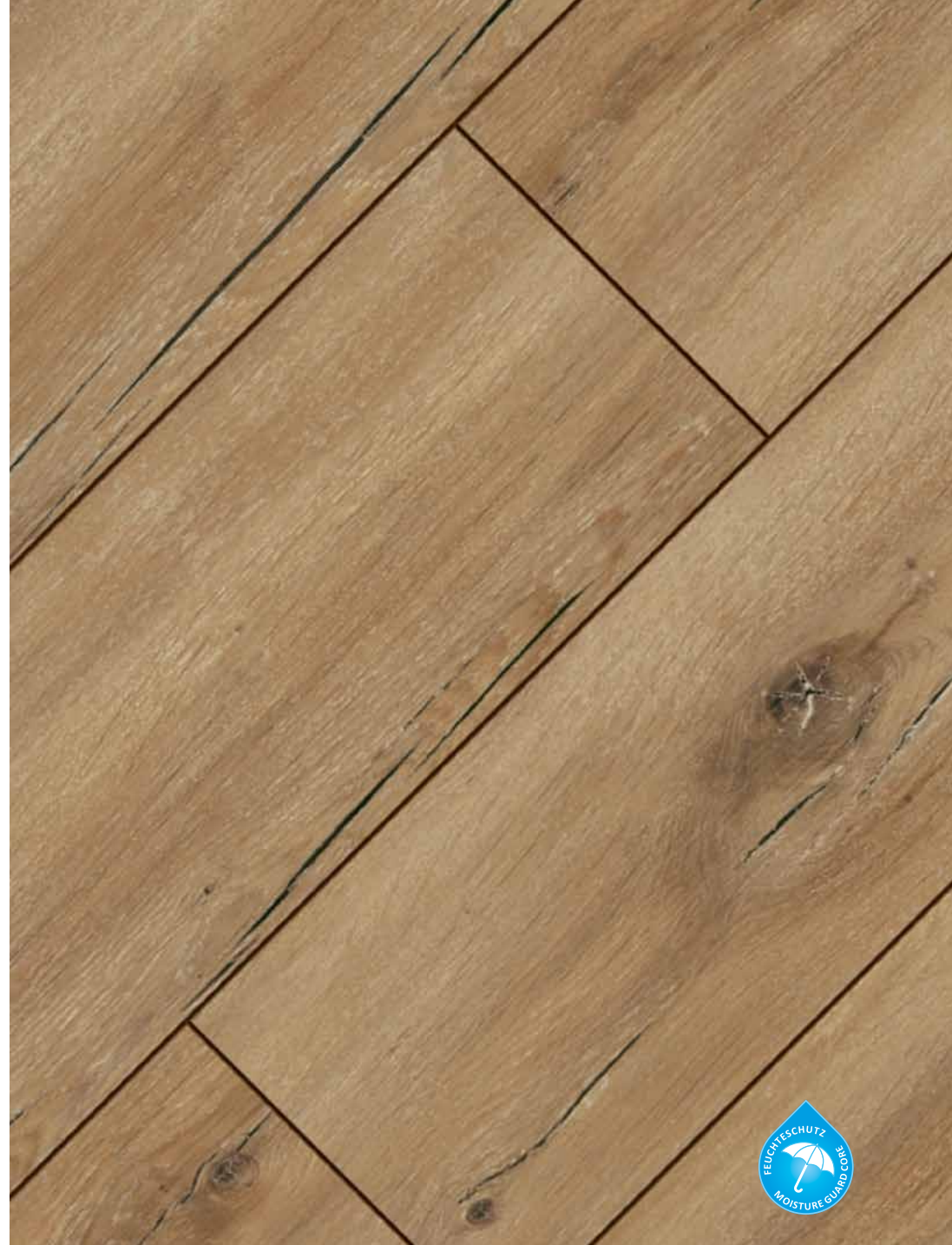
Everything in perfect balance: the classy CONTEMPORARY decors conjure up tasteful interiors in which refined living culture can thrive. These panels' exquisite surfaces, which perfectly replicate neatly laid, solid-wood boards, exude peace and constancy: floors that can continue to be enjoyed for a long, long time.

CONTEMPORARY ELEGANT AMBIANCE.

STRAIGHT OAK

10mm · 1-strip · AF · V4 groove

VB 1007



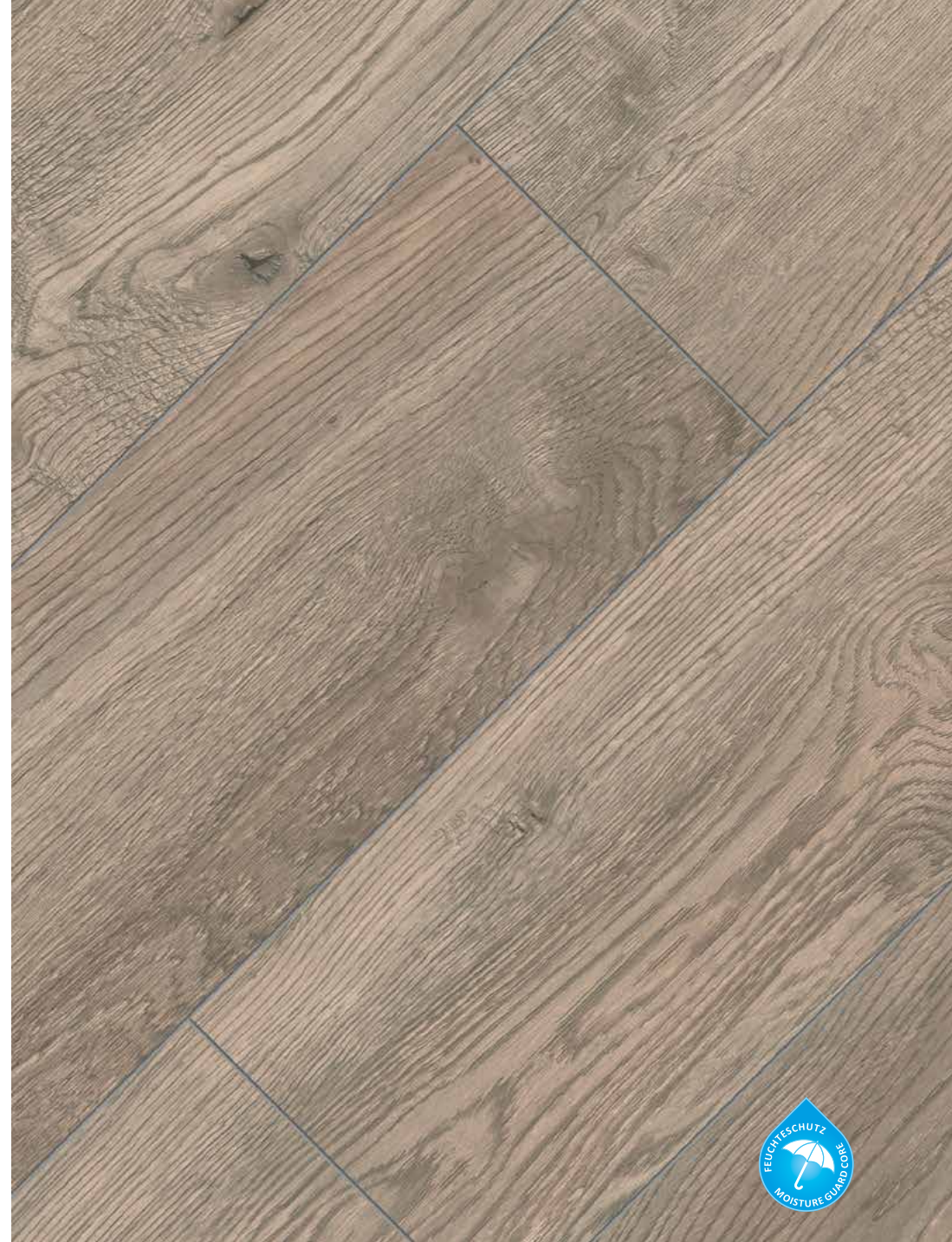


CONTEMPORARY
ELEGANT AMBIANCE.

BRADFORD OAK

10mm · 1-strip · AF · V4 groove

VB 1008



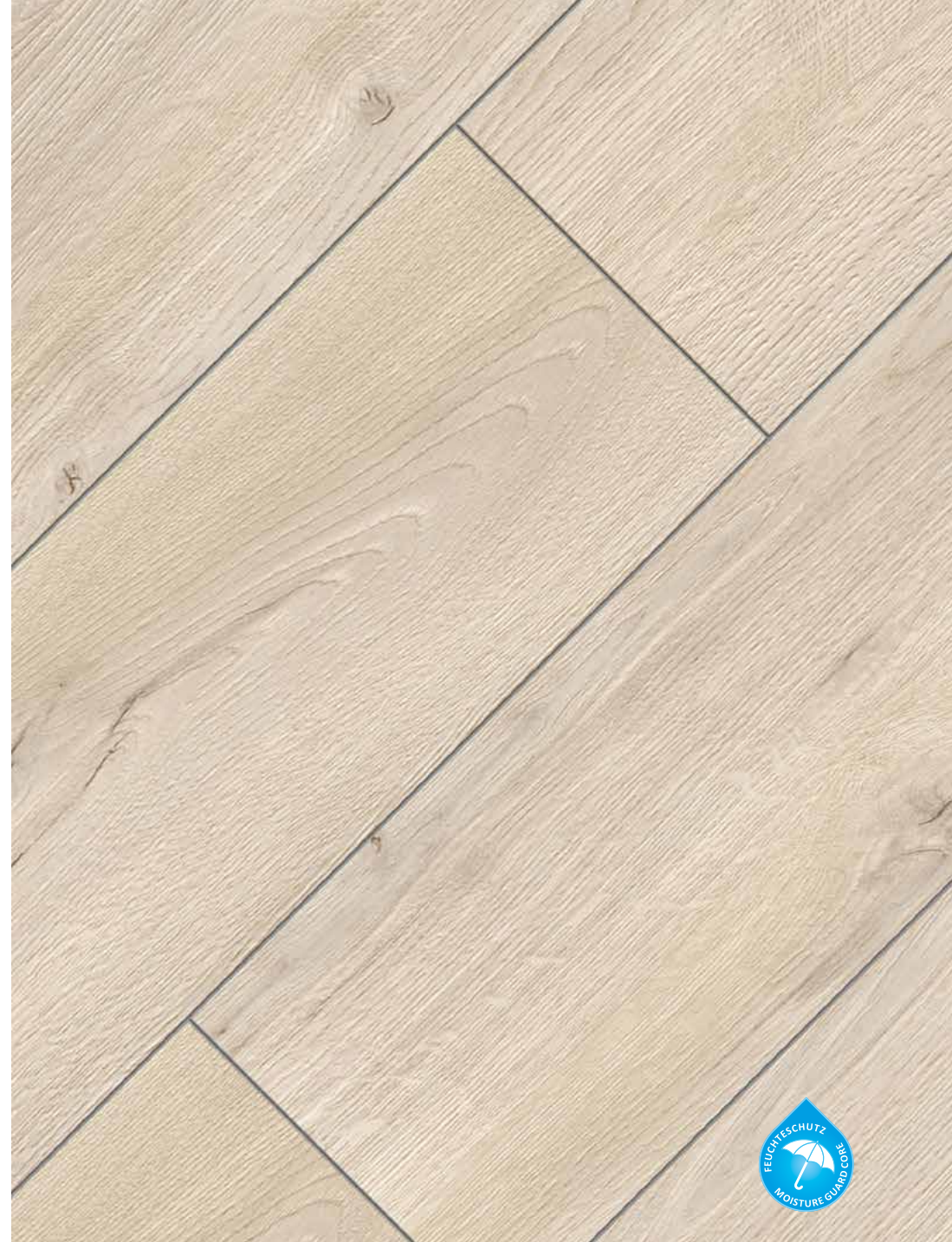


CONTEMPORARY
ELEGANT AMBIANCE.

BRIXTON OAK

10mm · 1-strip · AF · V4 groove

VB 1009





CONTEMPORARY
ELEGANT AMBIANCE.

LONDON OAK
10mm · 1-strip · AF · V4 groove

VB 1010



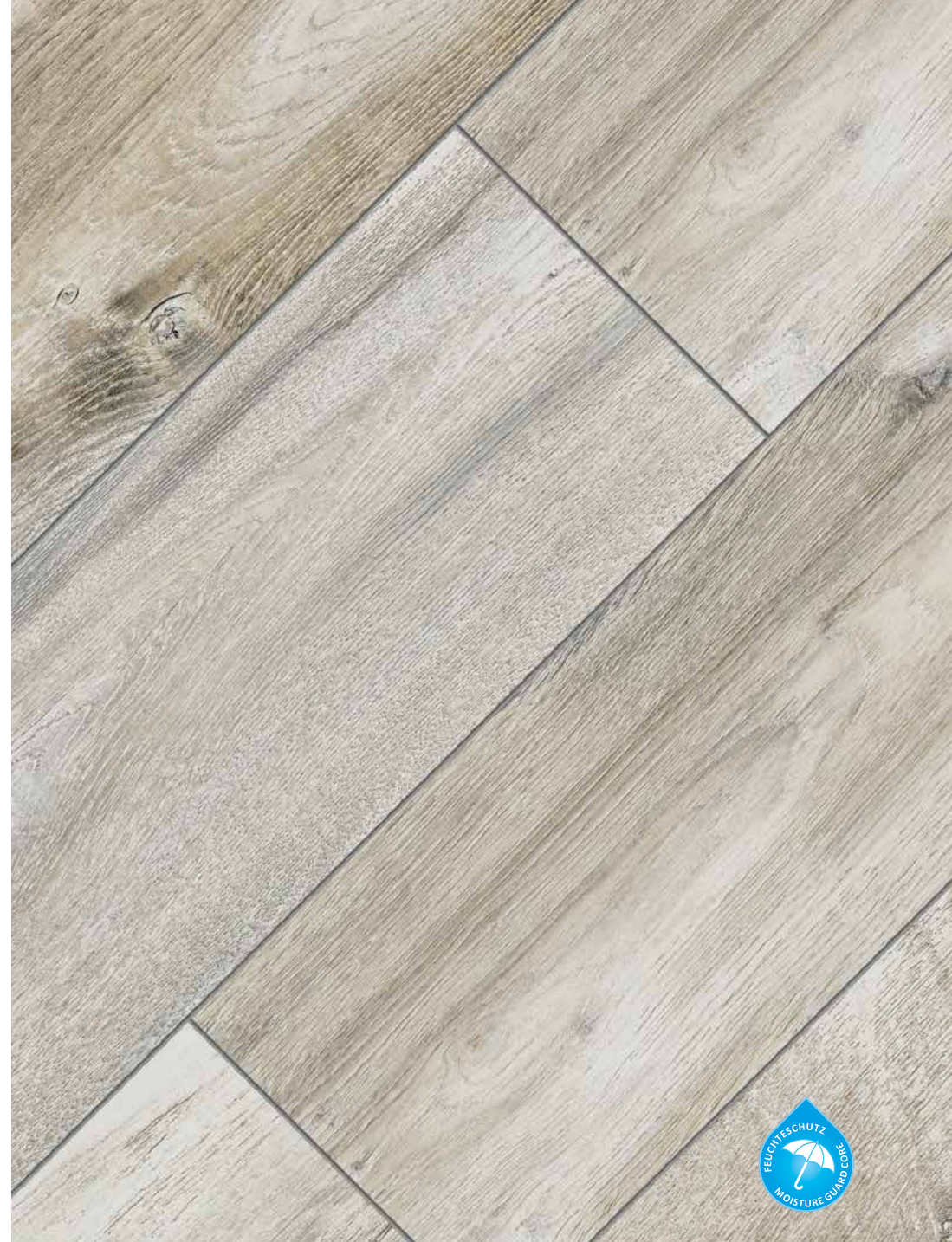


CONTEMPORARY
ELEGANT AMBIANCE.

PEARL OAK

10mm · 1-strip · AF · V4 groove

VB 1011





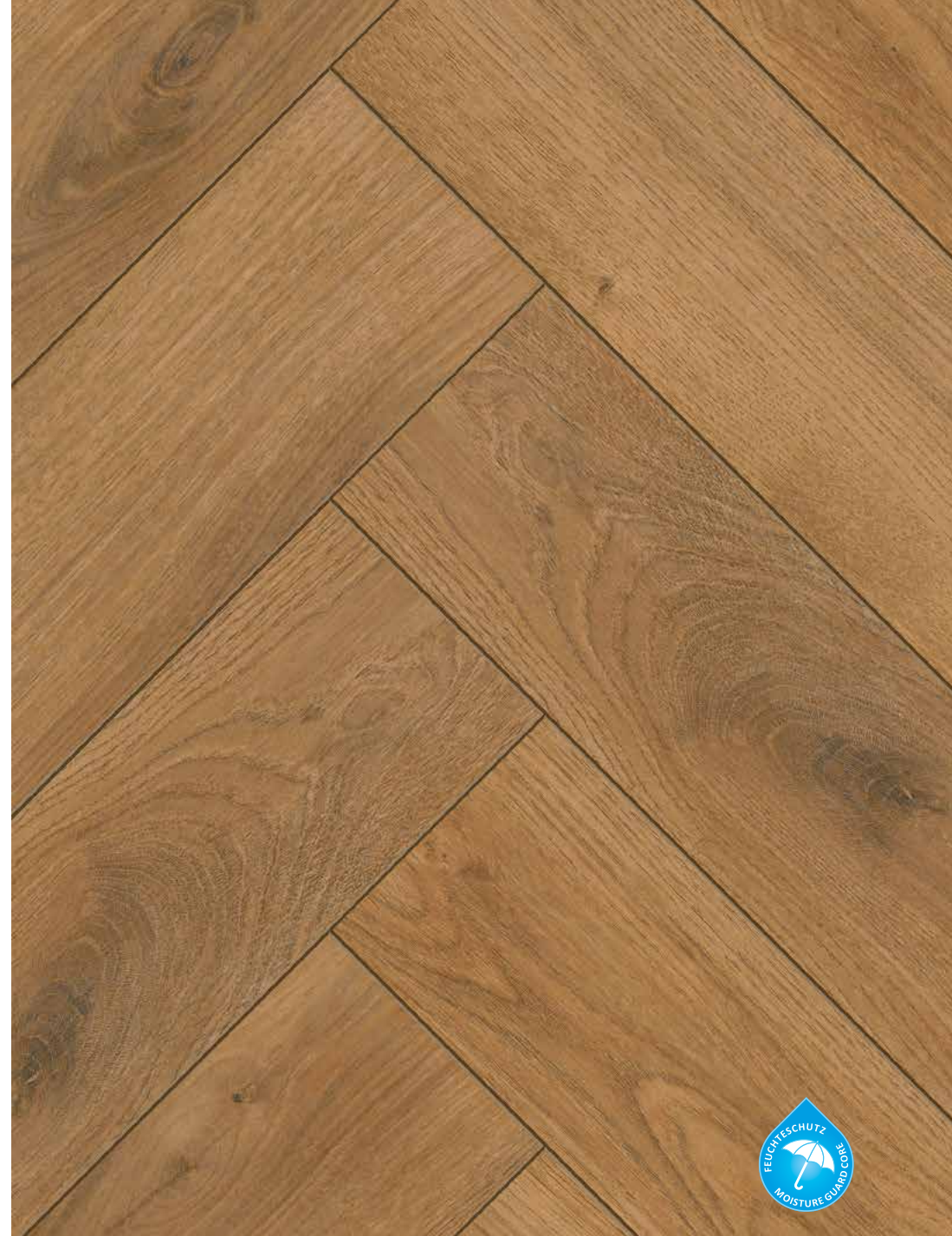
Available in different shades, this highly up-to-date and yet classic-looking herringbone-flooring can be combined with practically any furnishing style. HERITAGE lends even the most minimalist ambience a subdued nuance of Art Deco and Art Nouveau. Inevitably, the panels arranged in staggered 90° angles recall the golden age of Viennese cafés, Italian opera houses and classical theatres without impairing the modernity of the interior.

HERITAGE INSPIRED BY TRADITION.

HARMONY OAK

8mm · 1-strip · AF · V4 groove

VB 805



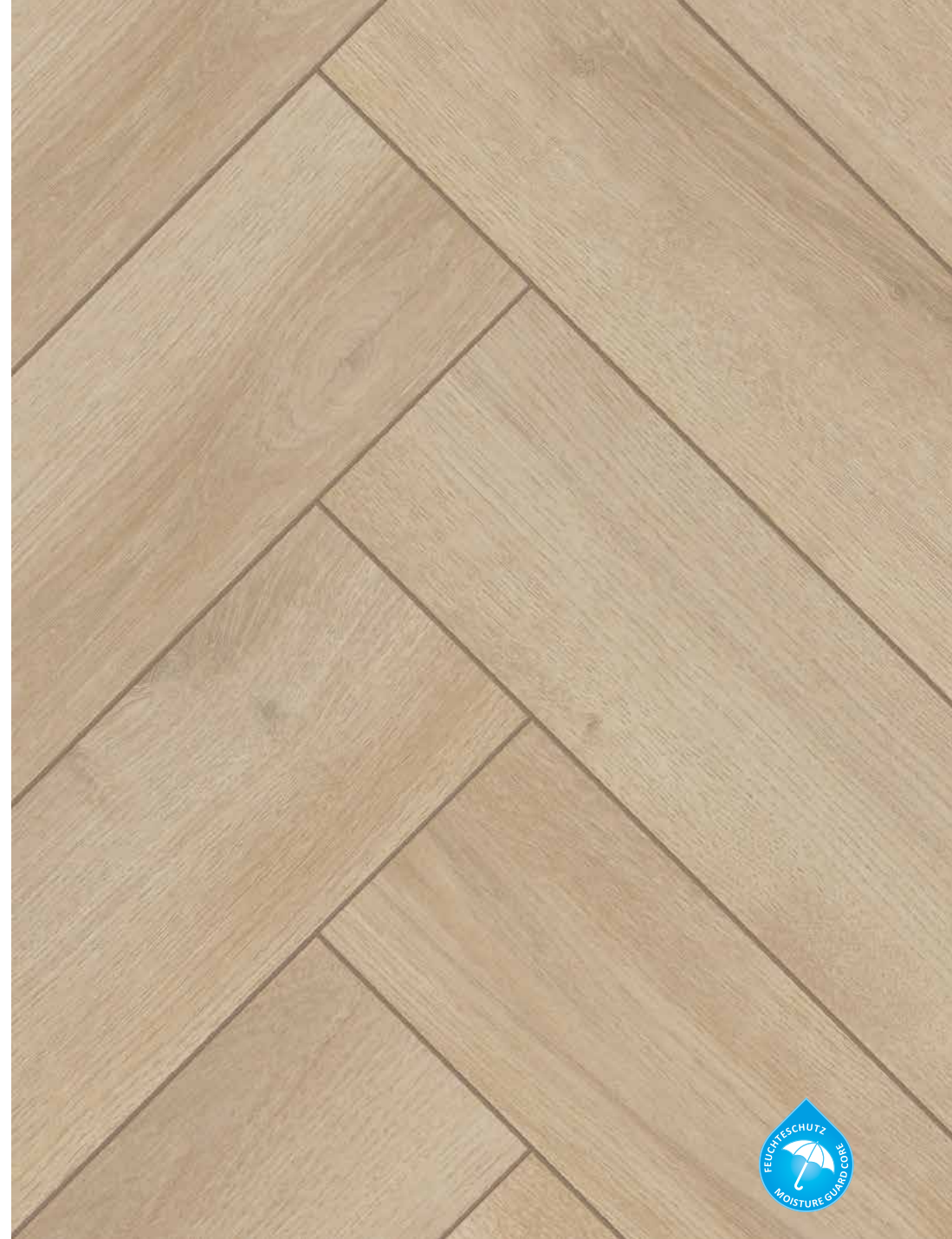


HERITAGE
INSPIRED
BY TRADITION.

HARMONY OAK BEIGE

8mm · 1-strip · AF · V4 groove

VB 806



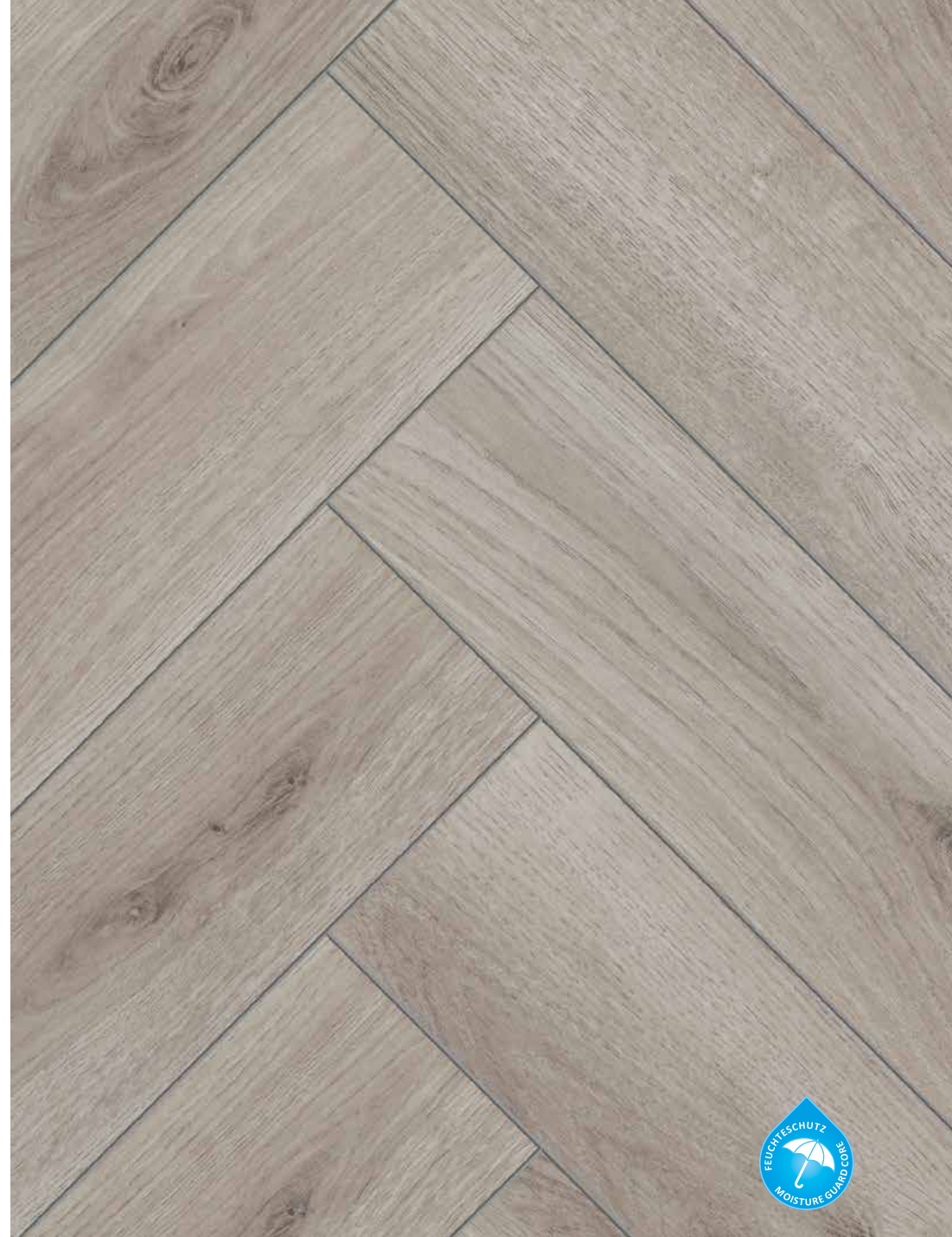


HERITAGE
INSPIRED
BY TRADITION.

HARMONY OAK GREY

8mm · 1-strip · AF · V4 groove

VB 807



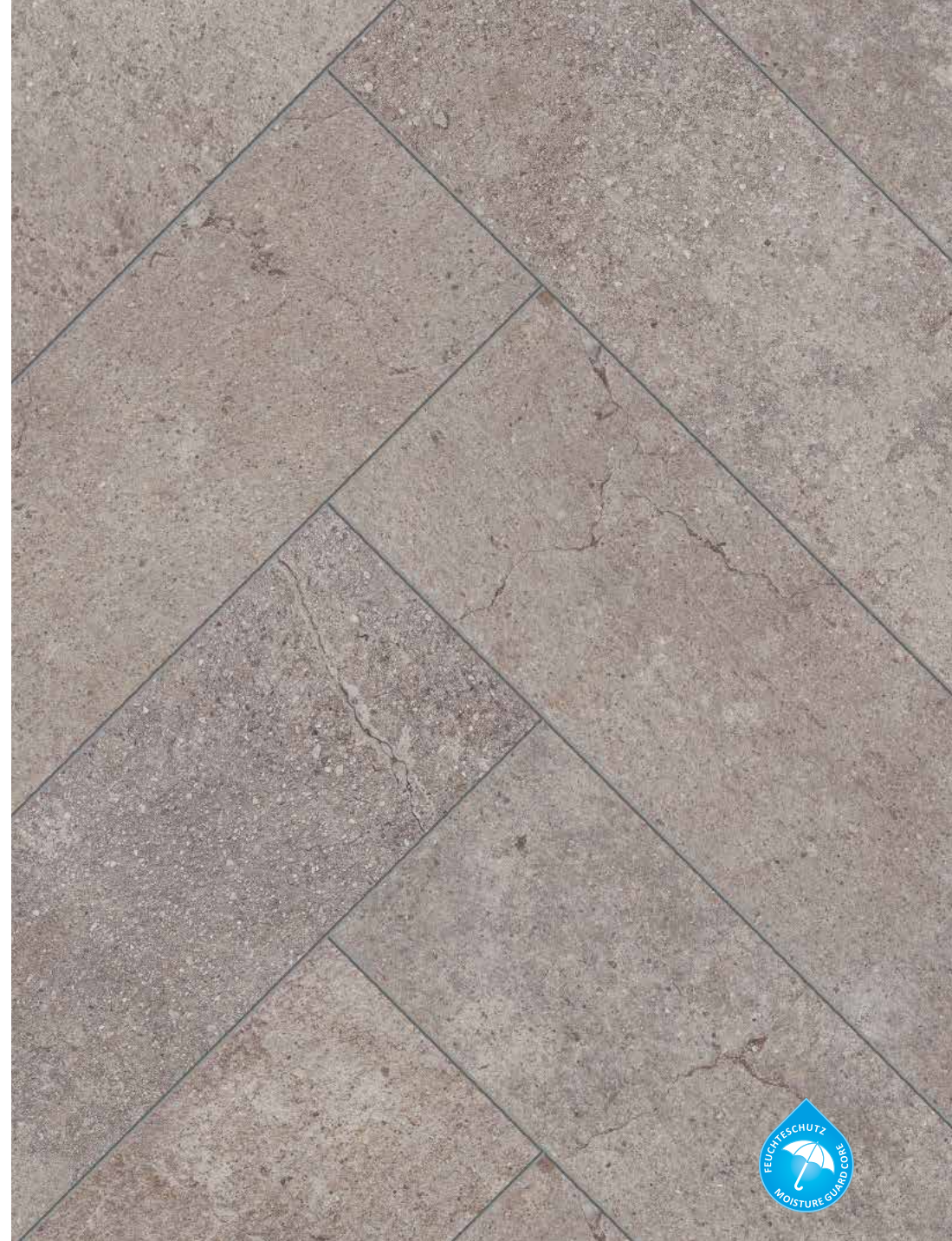


HERITAGE
INSPIRED
BY TRADITION.

CERSAI

8mm · 1-strip · ST · V4 groove

VB 808





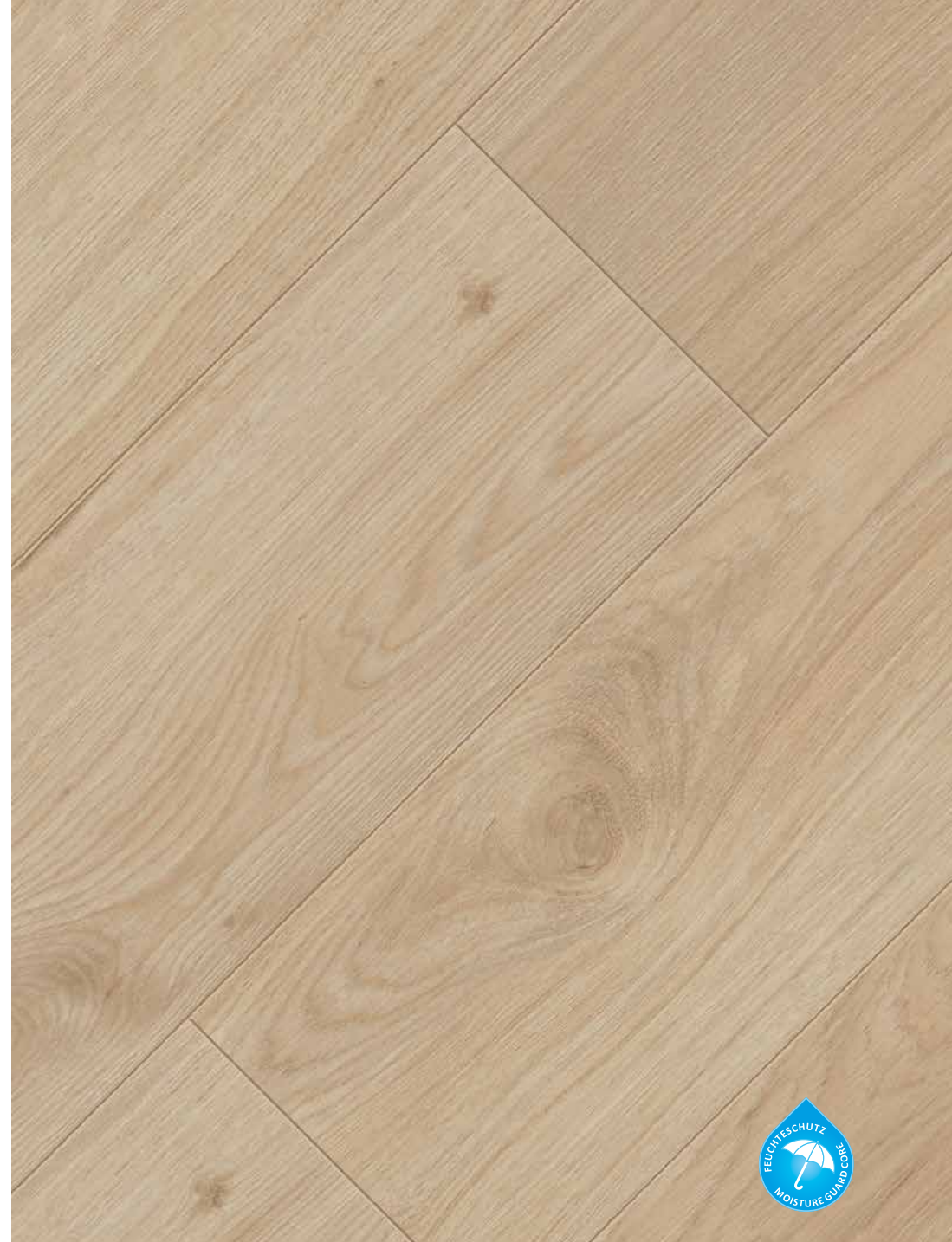
At home in the world. COSMOPOLITAN is persuasive with its blend of elegance and suitability for everyday use. This collection comprises six wood looks which ideally underscore rooms' character.

COSMOPOLITAN URBANE CHARM.

WELLNESS OAK

8mm · 1-strip · AF · V4 groove

VB 825 V





COSMOPOLITAN URBANE CHARM.

PURE ELM

8mm · 1-strip · AF · V4 groove

VB 826 V





COSMOPOLITAN URBANE CHARM.

BALTIMORE OAK

8mm · 1-strip · AF · V4 groove

VB 827 V



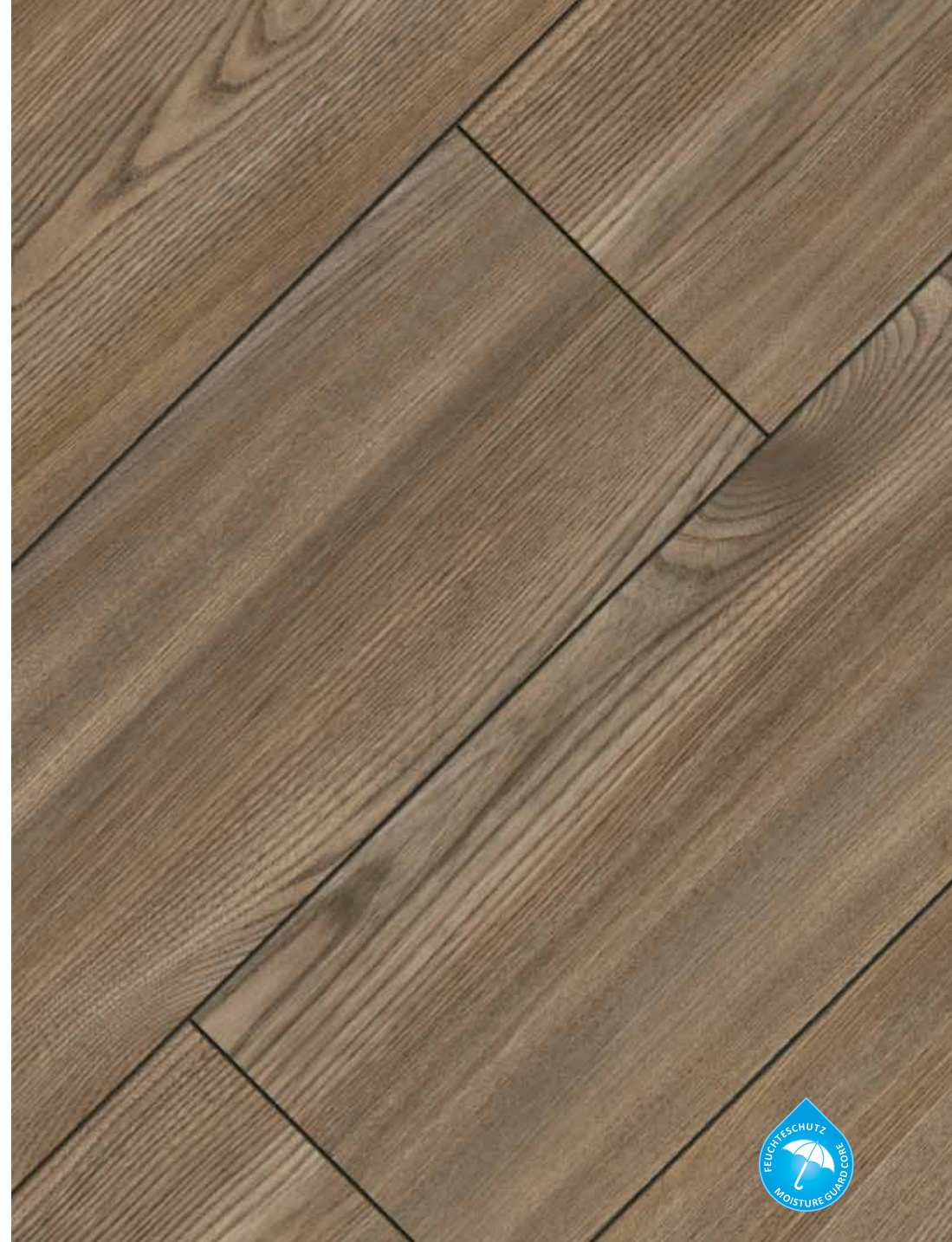


COSMOPOLITAN URBANE CHARM.

SUNRISE ELM

8mm · 1-strip · AF · V4 groove

VB 828 V



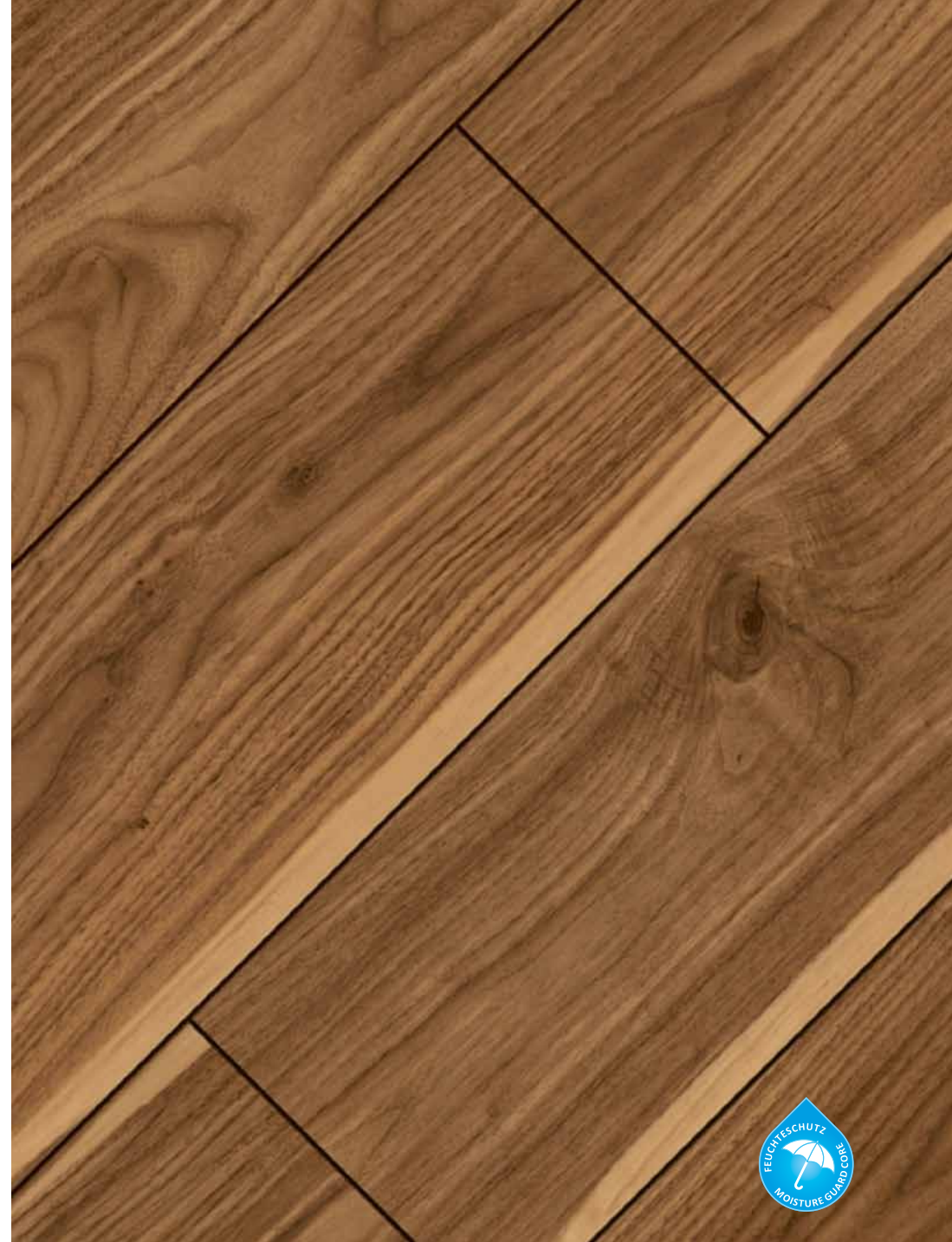


COSMOPOLITAN URBANE CHARM.

DUBLIN WALNUT

8mm · 1-strip · PR · V4 groove

VB 829 V

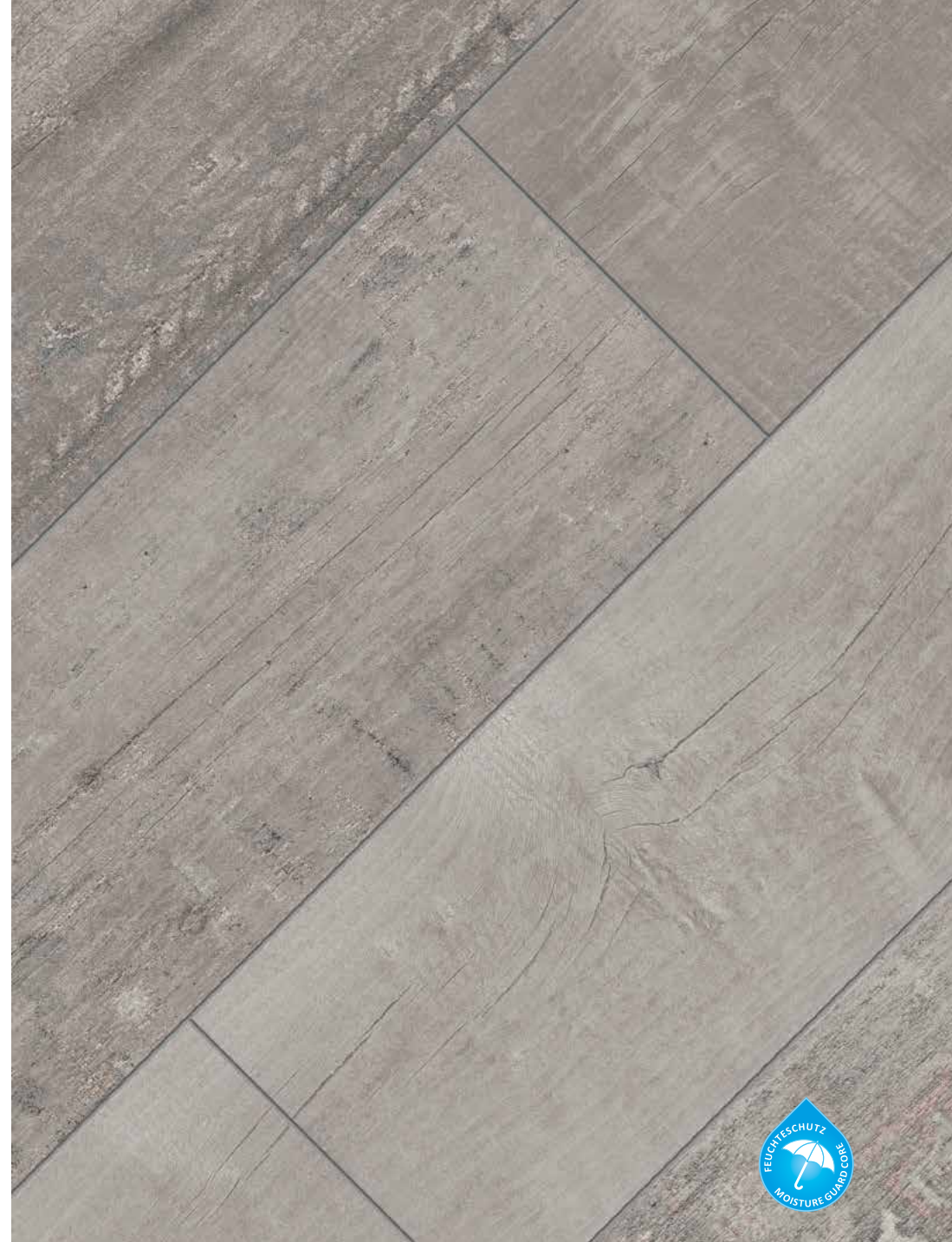




COSMOPOLITAN URBANE CHARM.

CASABLANCA
8mm · 1-strip · ML · V4 groove

VB 830 V



COUNTRY



VB 1201 · STONE OAK

ER



VB 1207 · WHITE OAK

ER



VB 1202 · CASTLE OAK

ER



VB 1208 · VALLEY OAK

ER



VB 1206 · MEADOW TEAK

ER



VB 1209 · SHEFFILED OAK

ER

CONTEMPORARY



VB 1007 · STRAIGHT OAK

AF



VB 1010 · LONDON OAK

AF



VB 1008 · BRADFORD OAK

AF



VB 1011 · PEARL OAK

AF



VB 1009 · BRIXTON OAK

AF

HERITAGE



VB 805 · HARMONY OAK

AF



VB 807 · HARMONY OAK GREY

AF



VB 806 · HARMONY OAK BEIGE

AF



VB 808 · CERSAI

ST

COSMOPOLITAN



VB 825 V · WELLNESS OAK

AF



VB 828 V · SUNRISE ELM

AF



VB 826 V · PURE ELM

AF



VB 829 V · DUBLIN WALNUT

PR



VB 827 V · BALTIMORE OAK

AF



VB 830 V · CASABLANCA

ML



THE CLIC-SYSTEM



COUNTRY, CONTEMPORARY, COSMOPOLITAN:

Installing a floor becomes child's play: A fingertip is enough to join panels – simply unpack, lay, snap together and done. No effort involved – your hammer and block can stay in the tool box.



Information about installing the HERITAGE collection can be found here:

[floors.villeroy-boch.com / installation](https://floors.villeroy-boch.com/installation)

PANEL CONSTRUCTION

Villeroy & Boch laminate consists of at least three stable layers which ensure the extraordinary durability and unique quality of Villeroy & Boch floors.

- a** The top surface of the flooring consists of a specially resistant protective overlay film. This is fused with an attractive resinated decorative film into a practically abrasion-proof, hardwearing surface.
- b** Extremely dense HDF fiberboard forms the supportive core (HDF, E1).
- c** On the undersurface of the core a dampness-impeding stabilization film ensures and preserves the high structural stability of Villeroy & Boch laminates.



The laminate floorings have been optimised so as to be able to withstand the effects of moisture over time. Therefore they are suitable for damp rooms thanks to its significantly reduced swelling behaviour.

Not suitable for outdoor areas, rooms with permanently high moisture load, e.g., shower cubicles, saunas and rooms with floor drains.

THE RIGHT BASIS

Once you have decided for a laminate floor, when quality and appearance are a perfect fit, then you need to check the requirements for perfect installation.

Very important is a suitable subfloor

- Old flooring such as wood, firmly-adhering PVC, dry ceramic, linoleum
- Cement screed (max. residual moisture: 2.0 CM%)
- Anhydrite cement and anhydrite flow cement screed (max. residual moisture: 0.3 CM%)
- Magnesia screed (max. residual moisture: 3.0 CM%)

Have a screed specialist in your area give you a residual moisture report!

Floors in wet rooms / damp rooms, saunas, carpeting and xylolith are not suitable subfloors. The subfloor must be dry, level, firmly affixed and clean. Minor unevenness can be compensated with an underlay mat or - if exceeding 3mm/m - sanded down or leveled with a filler.

FLOOR HEATING – NO PROBLEM

Villeroy&Boch laminate floors can be readily installed upon underfloor heating, serve well and even help to save on heating costs.

- Be sure to heat mineral underlays before flooring installation to eliminate any excess dampness
- Have a heating specialist in your area give you a heating report
- Ensure that during installation, the surface temperature of the floor is at least 15 °C (60 °F)
- For dampness insulation and as a vapor barrier, use a PE film (0.2mm) underlayment
- For sound absorption you can use PE foam or an underlay mat
- At the beginning of each heating period, when you first turn on the underfloor heating, raise the temperature gradually in 5 °C (9 °F) increments per day until you reach the desired temperature. The floor's surface temperature should not exceed 26 °C (80 °F)



CLEANING AND CARE

Villeroy&Boch floors are not only hygienic, but also very easy to look after.

- Sweep the dry floor with a soft broom or use a vacuum cleaner
- Marks and dirt can be wiped off with a slightly damp cloth, following the grain of the plank
- For stubborn marks, please use laminate cleaner
- Please use felt pads under furniture and soft rubber castors on chairs
- Place door mats in special areas (hall, entrance). In industrial buildings, provide footwells
- Minor damage to the floor can easily be repaired with a laminate repair kit. In case of more serious damage, please consult a specialist

SKIRTINGS

Our skirtings blend perfectly with all decors. Thanks to the invisible clipholder system they are installed in a trice. And the integrated trunking device helps you to get TV and audio cables out of the way.



Skirting KTEX I

MDF, available in all decors,
for attachment system

19 × 58 × 2400 mm
10 pcs/box

Clips, bolts, screws
30 pcs/box



Skirting KTEX F

MDF, white, chamfered, paintable

18 × 80 × 2400 mm
8 pcs/box



Skirting KTEX P

MDF, white, profiled, paintable

18 × 80 × 2400 mm
8 pcs/box

ONLINE FLOOR STUDIO

Experience the effect of differing woods, ornamentation, wall and furniture colours in an accurate representation of any room.

The online floor studio is the ultimate tool for both end user and salesman.

Colour selector

With one mouse click you can select the appropriate shade and tone from our whole collection.

Additional selection criteria

These offer the perfect opportunity to narrow down your search for the perfect laminate. You can select from various qualities, like collection, decor number or panel thickness.

Surface view

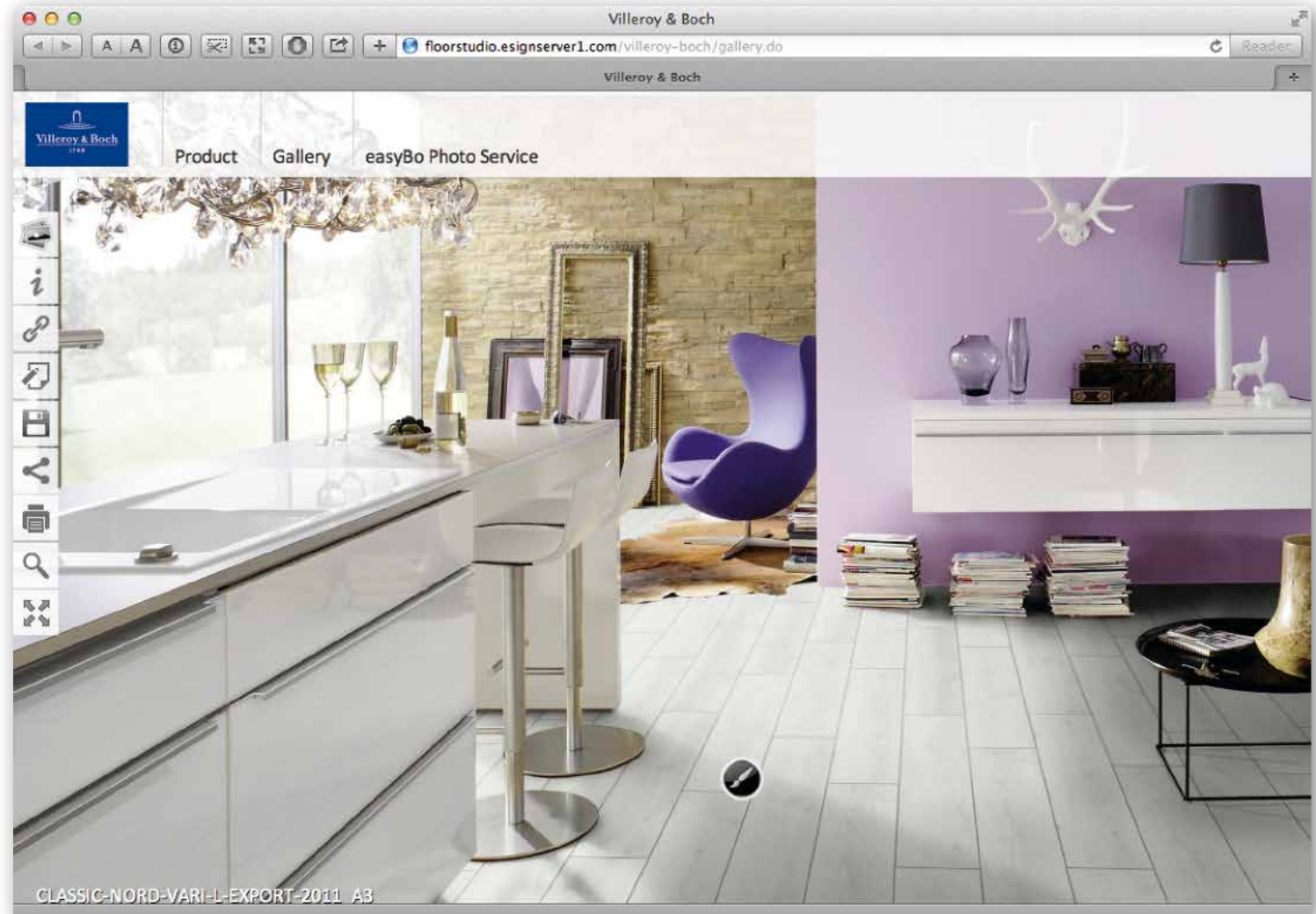
Allows you to view elements from both head-on and in perspective.

Notes

Gives you the opportunity to get extra information about any of our products simply and conveniently.

The link function

With the link function, you can put your ideas before customers, suppliers, users and planners.





OUR ENVIRONMENTAL PRODUCT DECLARATION*

In order for environmental product balance sheets to be meaningful, they must be objectively comparable. So to let our customers easily understand and contrast our lifecycle analyses and environmental product data with those of other materials, we have firmly committed

ourselves to a policy of total product transparency. We openly and voluntarily communicate the ecological balance sheets of our wood-based products in our Environmental Product Declarations (EPDs). Each EPD is issued by the Institute Construction and Environment e.V. (IBU)

in a format which was developed on the basis of internationally valid ISO standards in close collaboration with building and environmental authorities in Germany.



*Our Environmental Product Declarations (EPDs) are globally acknowledged and accepted Type III environmental labels conforming to ISO 14025.

WE STAND FOR ECOLOGY

The only way to master major challenges is for all players to pull on one rope. One of the biggest and most urgent tasks facing humanity today is to protect the environment. 'Together we are strong!' – this statement also applies to achieving the sustainability goals we have set ourselves.

All of our staff are involved in protecting the environment on a day-to-day basis. Each and every one of them is appropriately informed, instructed and trained. This ensures that every department has the environmental expertise it requires.

We use our 'management for the earth' programme to raise the level of environmental awareness in the entire *Villeroy&Boch* team. Our environmental management efforts focus on achieving the eco-efficiency defined in our corporate objectives. Every product that leaves our factory must exhibit both excellent

price/performance and superb environmental compatibility. This starts with the exclusive use of legal, certified raw materials from sustainably managed forests, continues with rigorously monitored production, and is also ensured during subsequent utilisation and ultimate disposal of our products.

WE HAVE BIG PLANS

We have a clearly defined goal: we want you, us and future generations to be able to enjoy living in good health on our unique blue planet tomorrow as well. We are therefore continuing to develop eco-friendly wood-based materials which are healthy for you and the environment alike.

Right now we are preparing EPDs for all of our laminate floorings to facilitate direct comparison and checking of their environmental benefits.

INTERIORS TO ENJOY

Leading-edge materials, extraordinary shapes and astonishing designs: all of our innovations stress functional design, stunning aesthetics and eco-friendliness.

Villeroy&Boch floors are

- *low-maintenance and hard-wearing*
- *flame resistant*
- *largely resistant to cigarette burns*
- *non-fading and retain their brilliance over many years*
- *rugged, load and impact-resistant*
- *abrasion-resistant*
- *produced from natural sustainable raw materials*
- *comfortable underfoot*
- *well suited for installation over subfloor heating*
- *stain-resistant*

PRODUCT SPECIFICATIONS

Test	Characteristics	Test Method
Formaldehyde emission	< 0.05 ppm	EN 717-1
Surface stain resistance	Grade 5, no visible changes to surface	EN 438-2, I5
Lightfastness	≥ Level 6 Blue Wool Scale ≥ Level 4 Grey Scale	EN ISO 105-B02 EN 20 105-A02
Fire resistance	Ignites with difficulty, at least C _{fl-SI}	EN 13501-1
Height difference between connected elements	Average: ≤ 0.10 mm max: ≤ 0.15 mm	EN 13329
Edge straightness (bend)	≤ 0.3 mm/m	EN 13329
Openings between connected elements	Average: ≤ 0.15 mm max: ≤ 0.20 mm	EN 13329
Static indentation	< 0.01 mm – no visible changes Impression in test with straight steel cylinder of 11.3 mm diameter	EN 433

Manufacture and product control are in accordance with DIN EN 13329.

The right to technical modifications is reserved.

The illustrations may differ from the actual products. As of 12-2018.

QUALITY ON PRINCIPLE

Not only do Villeroy&Boch floors meet the prescribed norms, they consistently exceed them. This is possible because Villeroy&Boch floors are produced fully integrated (from the tree to the finished panel) and pass through extensive testing and measuring facilities. For this reason, guarantees can be given on Villeroy&Boch floors which go far beyond warranties under law.

Villeroy&Boch provides buyers in addition to the unencumbered guarantee under law, an additional guarantee covering the abrasion resistance of the floor's surface. It extends from the date of purchase and covers the products as follows:

CONDITIONS OF GUARANTEE

Villeroy&Boch laminate panels must be checked before and during installation for any defects. No liability is accepted for laminate flooring installed despite visible defects.

Villeroy&Boch laminate floors must be installed properly according to the instructions, in a dry room, and in accordance with the respective use class. No liability is accepted for laminate floors installed in damp rooms.

Abrasion areas on laminate floors must be clearly visible and at least 1cm² in size. And in particular the design layer must be completely abraded. No liability is accepted for abrasion on the edges of the elements or for unusual or improper use, and in particular for damage caused by mechanical stress.

Validity of guarantee is dependent on regular cleaning and maintenance of Villeroy&Boch floors as described in the care instructions.

Claims under guarantee are valid only if submitted within 30 days of ascertaining damage and accompanied by the original receipt from the retailer. In investigating a guarantee claim, we retain the right to examine the floor in question on site.

OUR GUARANTEE

In cases falling under guarantee, we will deliver a replacement for the damaged element. If the flooring in question is no longer available, then the buyer can choose a replacement of equal value from the current Villeroy&Boch product line.

Since an annual 10% depreciation in the value of laminates can be assumed, delivery of a compensation product is dependent on payment of the appropriate difference by the buyer.

No liability is accepted for further damages, especially consequential damages such as those incurred during installation or removal, or transport costs for damaged Villeroy&Boch laminate floors.



COUNTRY

- Private use: 30 years guarantee
 - Commercial use: 5 years guarantee
- according to manufacturer's conditions

CONTEMPORARY

- Private use: 30 years guarantee
 - Commercial use: 5 years guarantee
- according to manufacturer's conditions

HERITAGE

- Private use: 25 years guarantee
 - Commercial use: 3 years guarantee
- according to manufacturer's conditions

COSMOPOLITAN

- Private use: 25 years guarantee
 - Commercial use: 3 years guarantee
- according to manufacturer's conditions



VILLEROY & BOCH

*Swiss Krono Tex GmbH & Co. KG
Wittstocker Chaussee 1
D-16909 Heiligengrabe / Germany*

info4@floors.villeroy-boch.com

Your sales consultant:

